



COMPACT LAMINATE

Supermarkets/ Schools/ Offices/
Hotels/ Pubs/ Restaurants/ Bars/
Museums

! 储存 Storage

板材尽量避免存放在靠近室外的门口处
板材不应该储存在过于潮湿或者干燥的环境
在加工或安装之前，应该将板材置于现场至少72小时，使得板材和环境达到平衡

Compact laminate could not be stored near the door.
Compact laminate could not be stored in a too wet or hot environment
Compact laminate should be placed at least 72 hours before being processed or installed, so the sheet and the environment could achieve the balance.



A222899-R 北美枫木
④⑤⑥



E220860-R 浅麻红豆杉
④⑤⑥



E226212-R 麦芽织木(直)
④⑤⑥



A222939-R 皇家集层
④⑤⑥



E229966-R 山陵枫木
④⑤⑥



A222551-R 浅欧枫
④⑤⑥



A222550-R 红山毛榉
④⑤⑥



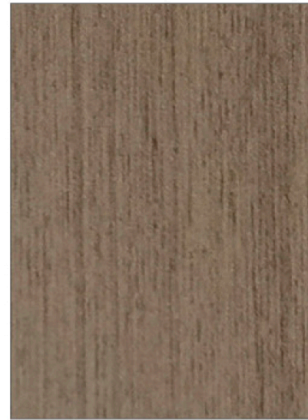
A23930-R 灰拉丝
④⑤⑥



E226437-R 蜡染栲木
④⑤⑥



E220861-R 橄欖紅豆杉
④⑤⑥



E225883-R 摩卡靚木
④⑤⑥



E220869-R 粉晶橡木
④



A222871-R 立体松木黑
④⑤⑥



A22811-R 非洲橡木
④⑤⑥



E225485-R 丁香枫木
④⑤⑥



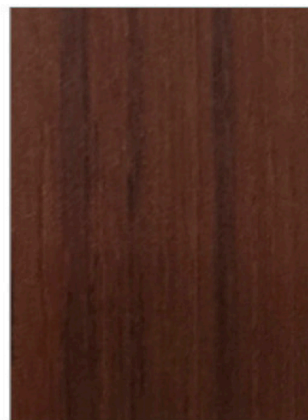
A222559-R 大斑马-2
④⑤⑥



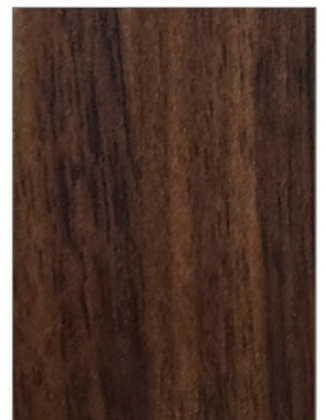
A222198-R 斑马木
④⑤⑥



E229398-R 緬甸柚木
④⑤⑥



A222904-R 榆木
④⑤⑥



A222302-R 林肯胡桃
④⑤⑥



COMPACT LAMINATE

Washroom/ Toilet / Kitchens /
Restroom/ Dining room/ Bedroom/
Changing Room/ Spas

储存 Storage

在储存和运输过程中，应该将板材放在托盘上并且托盘的尺寸应该略大于板材的尺寸
在托盘和板材之间放置一块垫板，最上面放一张盖板

During the storage and transport, compact laminate should be placed on the plate
whose size is slightly larger than boards.

A plate should be placed between the pallet and the boards and a cover plate
should be put above the boards.



E228834-R 白烟织木
④



E226439-R 沙点栲木
④⑤⑥



C224178-R 诺卡琳娜
④⑤⑥



A22809-R 亚洲橡木
④⑤⑥



A222941-R 日月雪松
④⑤⑥



A222942-R 雪月橡木
④⑤⑥



E225478-R 沙丘橡木
④



E225483-R 摩卡冷杉
④⑤⑥



E228860-R 风化柚木
④⑤⑥



A222929-R 灰榆
④⑤⑥



E226477-R 四季榆木
④⑤⑥



E228845-R 风化尤加利
④⑤⑥



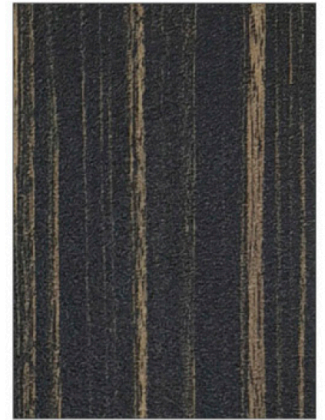
A222522-R 大红樱桃
④⑤⑥



E225150-R 美国风胡桃
④⑤⑥



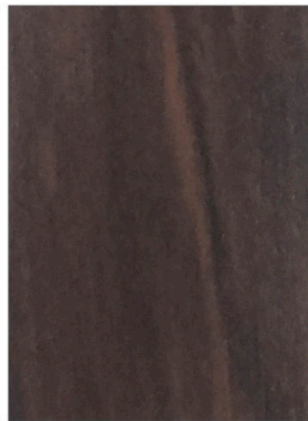
A222558-R 紫罗兰橡木
④⑤⑥



E229012-R 檀木(直)
④⑤⑥



E225481-R 橄榄木(直)
④⑤⑥



A22936-R 仲夏胡桃
④⑤⑥



A222943-R 新贵族樱桃
④⑤⑥



A222944-R 新东方红木
④⑤⑥



COMPACT LAMINATE

Leisure centers/ Swimming pools/
Gyms/ Healthcare center/
Hospital/ Airport



搬运

Handling

搬运过程中，应该将产品垂直抬起，以免板子划伤

搬运过程中，最好使用真空吸盘

Compact laminate is lifted vertically to avoid scratching.

It is better to use the vacuum chuck to lift the boards.



A222926-R 国森柚木
④⑤⑥



A222940-R 富贵集层
④⑤⑥



A222549-R 灰云杉
④⑤⑥



E228853-R 原野橡木
④⑤⑥



C227938-R 新纪元橡木
④⑤⑥



A222945-R 银杏木
④⑤⑥



C229122-R 法国白橡
④⑤⑥



A222946-R 皇家桦木
④⑤⑥



E220874-R 榛果樱桃木
④⑤⑥



E228846-R 天然尤加利
④⑤⑥



E225372-R 日之响
④⑤⑥



A222872-R 立体松木
④⑤⑥



A222521-R 竹纹
④⑤⑥



E226213-R 樱桃织木(直)
④⑤⑥



E229205-R 集层木(直)
④⑤⑥



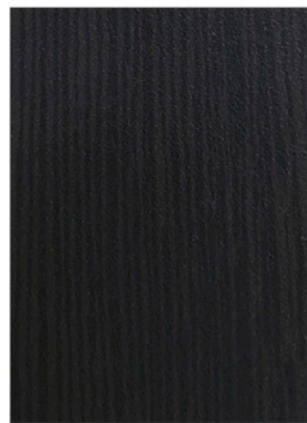
A222296-R 牛津樱桃
④⑤⑥



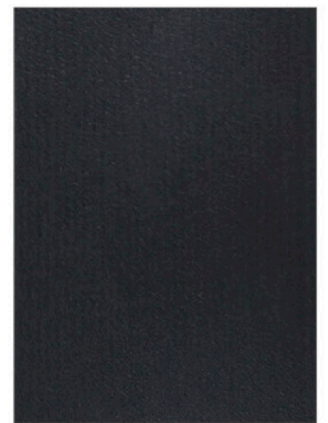
A222888-R 日本柚木
④⑤⑥



E229484-R 老梁木
④⑤⑥



A222511-R 马利铁刀
④⑤⑥



A222554-R 黑松木
4 5 6



COMPACT LAMINATE

Wall Cladding/ Toilet Partition/
Lockers/ Kitchen Cabinet/ Counter
Top/ Table Tops/ Benches

! 维护须知

Maintenance Instructions

用干净软布和温和皂液进行清洗，用水冲洗干净，让风吹干，可使饰面长时间保持亮丽。如遇顽固污渍，可使用清洁剂或异丙醇擦拭干净。

Wash it with a soft, clean cloth and mild soap, rinse well with water, dry, and the finish will last for a long time. If a stubborn stain persists, the laminate can be cleaned by wiping with Cleaner or Isopropyl Alcohol.



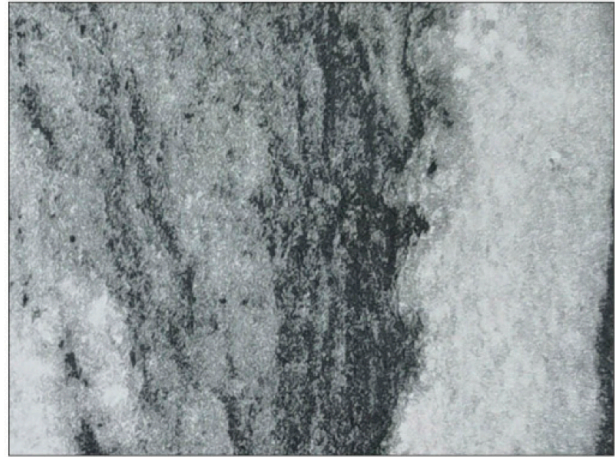
C22927-R 弗吉尼亚胡桃
④⑤⑥



E225262-SP 早春樱花木
④⑥



E117938 -PX 冰河
④



A231002-T4 喜马拉雅
④

④⑤⑥ 代表产品的宽度

④⑤⑥ Represents the width of products

④代表我们可以生产represents that we could produce

1220mm X 1830mm, 1220mm X 2440mm, 1220mm X 3050mm, 1220mm X 3660mm

⑤代表我们可以生产Represents that we could produce

1530mm X 1830mm, 1530mm X 2440mm, 1530mm X 3050mm, 1530mm X 3660mm, 1530mm X 4270mm

⑥代表我们可以生产Represents that we could produce

1830mm X 1830mm, 1830mm X 2440mm, 1830mm X 3660mm, 1830mm X 4270mm

我们可以提供素色、花色、木纹等不同类型的颜色、厚度(3-25毫米)和尺寸的选择。

We could provide solid color, patterns, wood grain and other color choices. In addition, we could provide different thickness(3mm-25mm) and sizes.

2018年推出2130mm*2130mm, 2130mm*3660mm, 2130mm*4270mm

In 2018, we could produce 2130mm*2130mm, 2130mm*3660mm, 2130mm*4270mm



A21930-R 藤白
④⑤⑥



A212062-R 荷花白
④⑤⑥



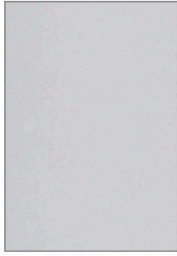
A212041-R 米黄
④⑤⑥



A212006-R 浅灰
④⑤⑥



A212064-R 深灰
④⑤⑥



A310949-R 白雪
④⑤⑥



A212008-R 暖白
④⑤⑥



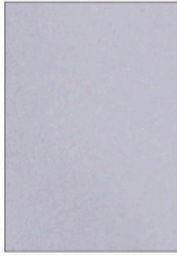
A212039-R 瓷土黄
④⑤⑥



E111834-R 羊毛
④⑤⑥



E110837-R 石墨黑
④⑤⑥



A212009-R 大白
④⑤⑥



A212183-R 深兰
④



A212011-R 宝兰
④⑤⑥



A212002-R 铁灰
④⑤⑥



A212001-R 黑
④⑤⑥



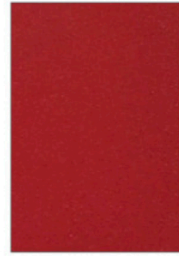
A212152-R 浅豆绿
④⑤⑥



A212060-R 粉红
④⑤⑥



A212015-R 皎兰
④⑤⑥



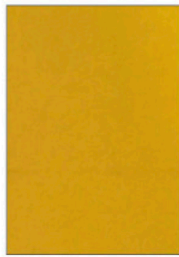
A212033-R 大红
④⑤⑥



A21932-R 嫩芽
④⑤⑥



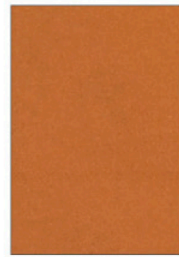
A212017-R 湛兰
④⑤⑥



A212038-R 大黄
④⑤⑥



A212026-R 翡翠绿
④⑤⑥



A212036-R 桔黄
④⑤⑥



A21935-R 浅石墨黑
④⑤⑥



产品规格
PRODUCT SPECIFICATIONS

尺寸:

Sizes available(mm):

1220x1830(4'x6'), 1220x2440(4'x8'), 1220x3050(4'x10'), 1220x3660(4'x12')

1300x2800(4.3'x9'), 1300x3050(4.3'x10')

1530x1830(5'x6'), 1530x2440(5'x8'), 1530x3050(5'x10'), 1530x3660(5'x12')

1830x1830(6'x6'), 1830x2440(6'x8'), 1830x3660(6'x12'), 1830x4270(6'x14')

2130x2130(7'x7'), 2130x3660(7'x12'), 2130x4270(7'x14')

厚度:

Thickness range: 3mm-25mm

抗倍特 COMPACT LAMINATE

compact laminate is a structural panel faced with two sides decorative surfaces. For its high strength, impact, water and humidity resistance, it is ideal for interior use such as wall panels, toilet partition, counters, lockers and furniture.

It could be drilled, tapped, sanded, shaped and cut with standard carbide tipped tools.

The rich colors of compact laminate make it outstanding in decoration.

抗倍特是一种双面高压耐火装饰板，具有坚固、抗撞击、防水、耐潮湿等功能，非常适合室内使用，应用于墙板、卫生间隔断、柜台、储物柜和家具。可用标准碳钢合金刀具进行钻孔、敲击、砂磨、导型、切割等工作。板材色彩丰富，提供多样化的选择，为生活增添美感。

产品结构 PRODUCT STRUCTURE

Overlay

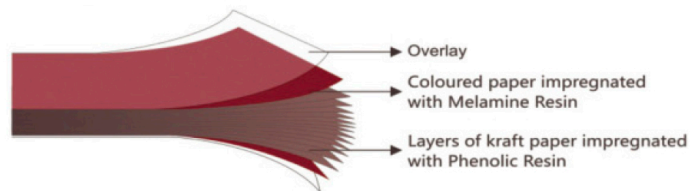
表面透明层

Coloured paper impregnated with melamine resin

三聚氰胺浸渍过的装饰色纸

Layers of kraft paper impregnated with phenolic resin

酚醛树脂浸渍过的牛皮纸



产品性能 Characteristics

