



01.

CLADBOARD

A modern building exterior fiber cement board with high density, high strength, and low water absorption and through-colored.

- Stable dimension
- Fire resistance
- Moisture resistance
- Weather resistance
- Durable and mothproof
- Thermal insulated

Application

1. Decoration curtain wall
2. External insulated system for both commercial and residential building
3. Internal decoration on wall and ceiling

Product information

Name

Cladboard

Size

2440×1220mm、3050×1220mm

Thickness

8、9、10、12、15mm

Surface

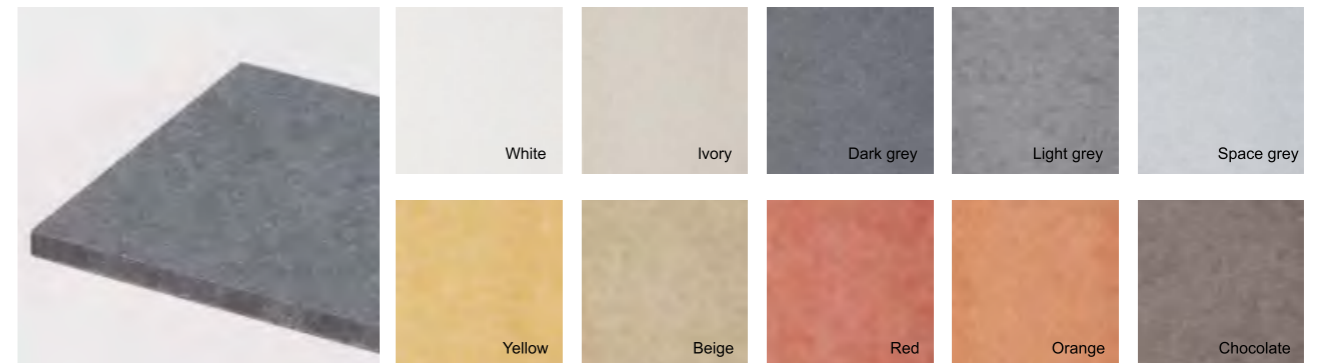
Polished、Textured、Natural

Color

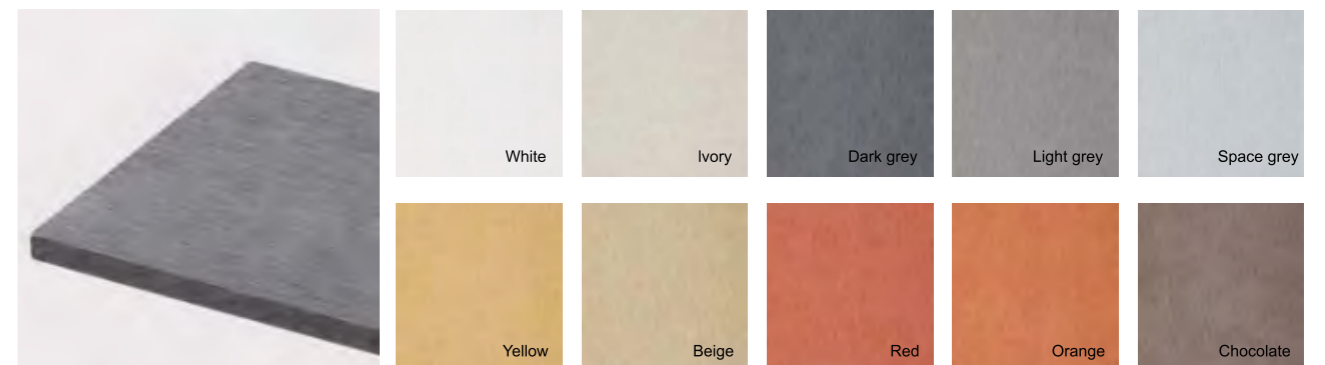
White、Ivory、Dark grey、Light grey、Space grey、Yellow、Beige、Red、Orange、Chocolate

▲Please contact us for other dimensions.

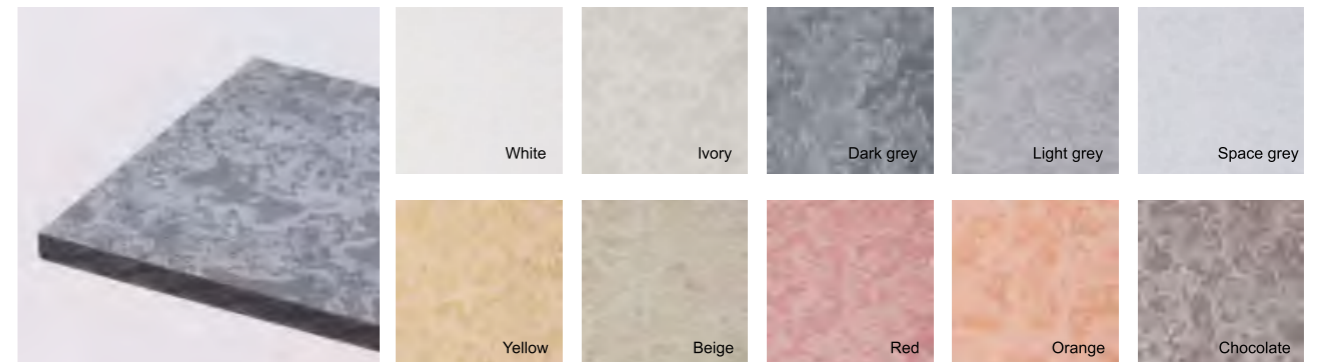
Polished Surface ↓



Textured Surface ↓

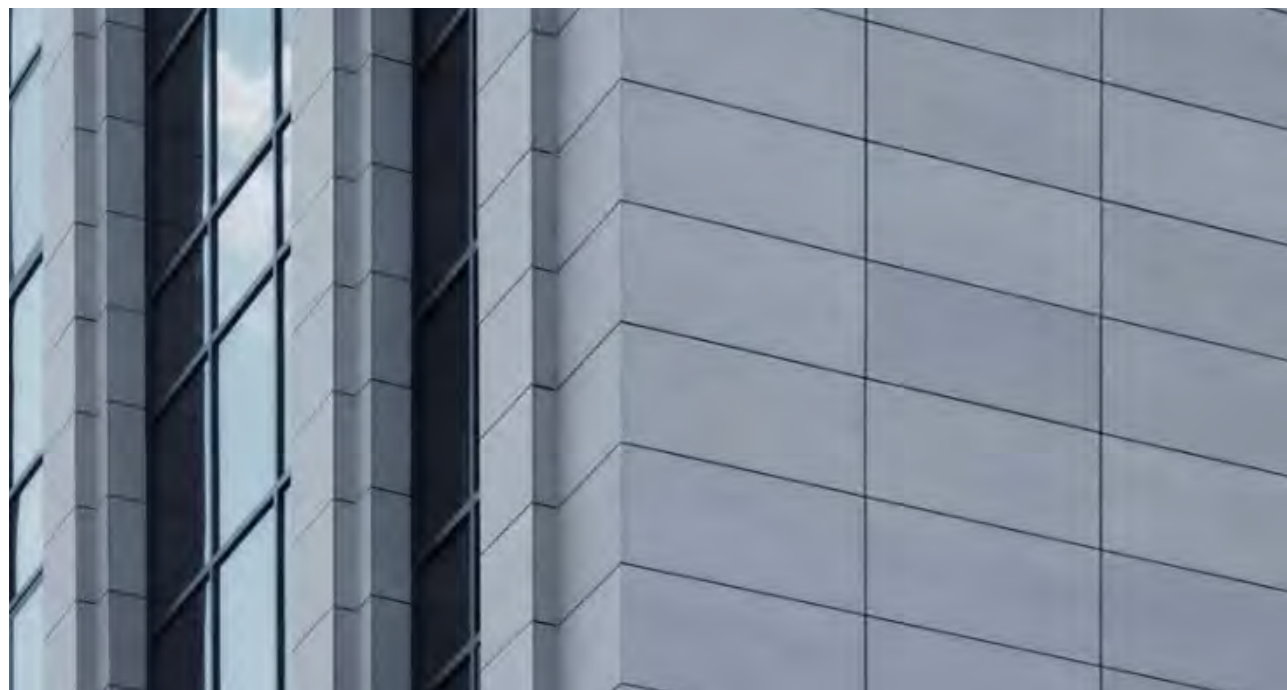


Natural Surface ↓



Cladboard Technical Properties

Item	Index
Density	≥1.40 g/cm ³
Bending Strength(Water Saturated)	≥13 MPa
Bending Strength(Oven Dry)	≥18 Mpa
Impact Strength	≥1.4 KJ/m ²
Water Absorption	≤28 %
Moisture Movement	≤0.25 %
Thermal Conductivity	≤0.35 W/(m·k)
Water Impermeability	Pass
Non-combustibility	EN 13501 ; AS 1530 ; ASTM E84
Freeze-thaw Cycles	Pass
Heat Rain Resistance	Pass
Warm Water	Pass
Soak-dry	Pass
Radioactivity	Ir<1.0 ; Ir<1.0
Asbestos Content	100% Asbestos free



Cladboard exterior cladding system

Cladboard system is installed onto concrete or brick wall. Cladboard Rivet System and Cladboard Invisible System are commonly used nowadays depending on the cost and architectural design of the building.



Cladboard exterior cladding Cladboard Rivet System

Cladboard Rivet System is an exterior ventilation curtain wall. It is thermal insulated and typhoon resistant.

Application: Exterior cladding for both low and high rise buildings.

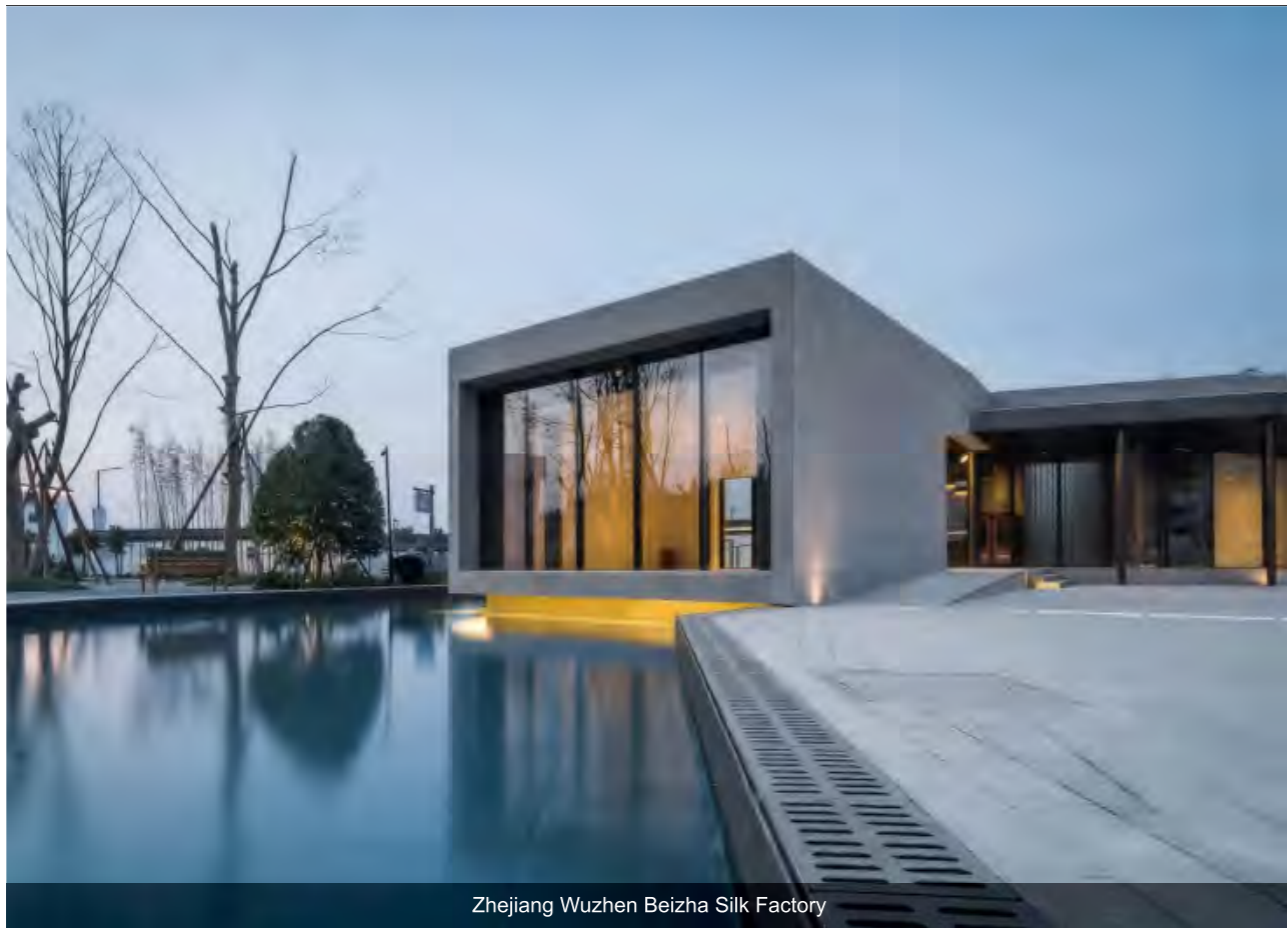
Cladboard exterior cladding Cladboard Invisible System

Cladboard Invisible System is perfectly used in high demand of aesthetics cladding. There is no need to drill holes or nail on the board during installation, making the surface of the board flat and clean. As the board is a lightweight material, it greatly improves construction efficiency.

Application: Suitable for outdoor occasions of various high-end low-rise and multi-story civil buildings and industrial buildings, as well as for the renovation of exterior walls of old buildings.







Zhejiang Wuzhen Beizha Silk Factory



Wenxian Primary School, Chengxiang District, Putian City, Fujian Province



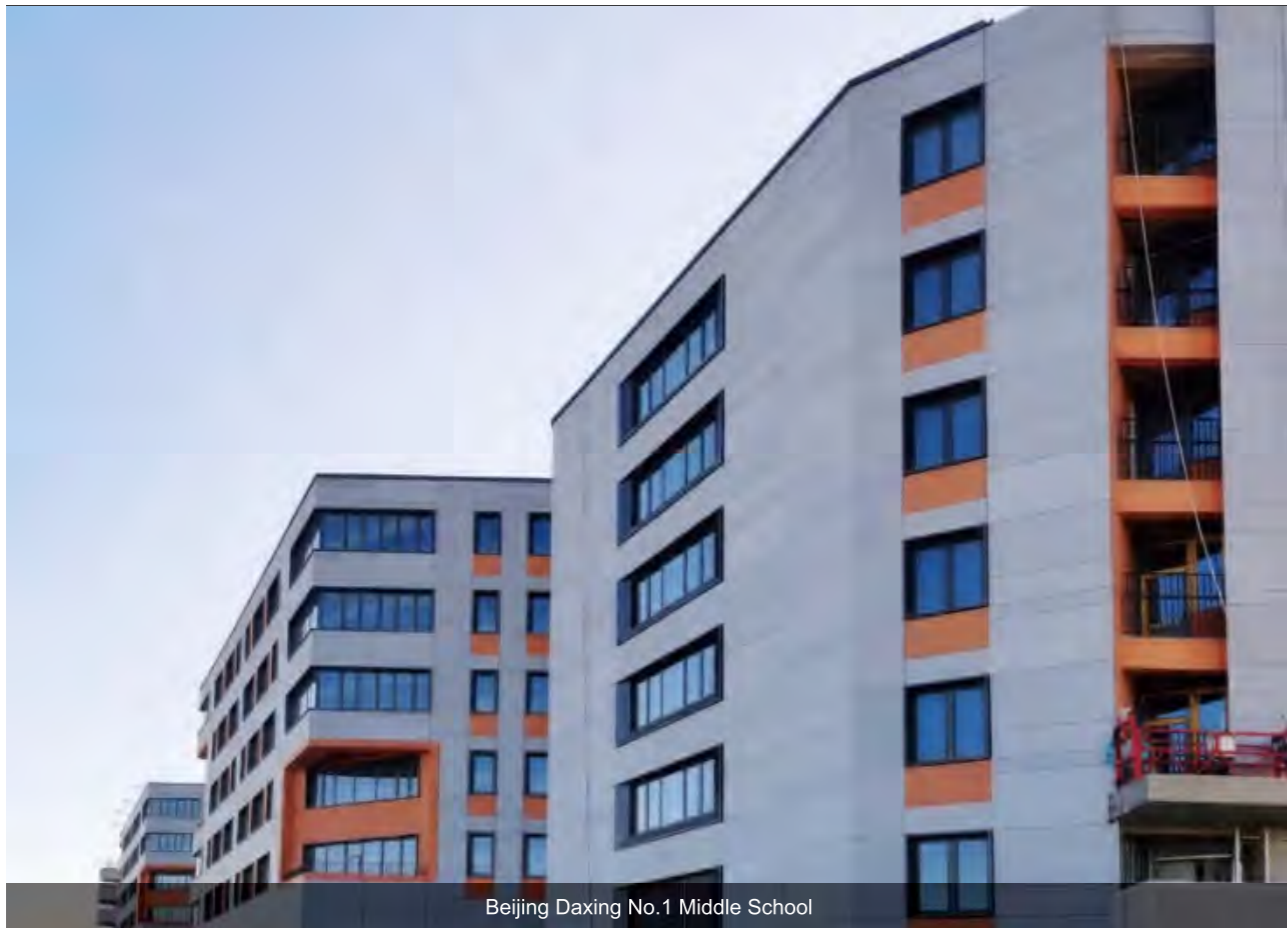
Shabei Experimental School, Jingzhou City, Hubei Province



Longjiang Automobile Comprehensive Passenger Transport Hub, Fuqing City, Fujian Province



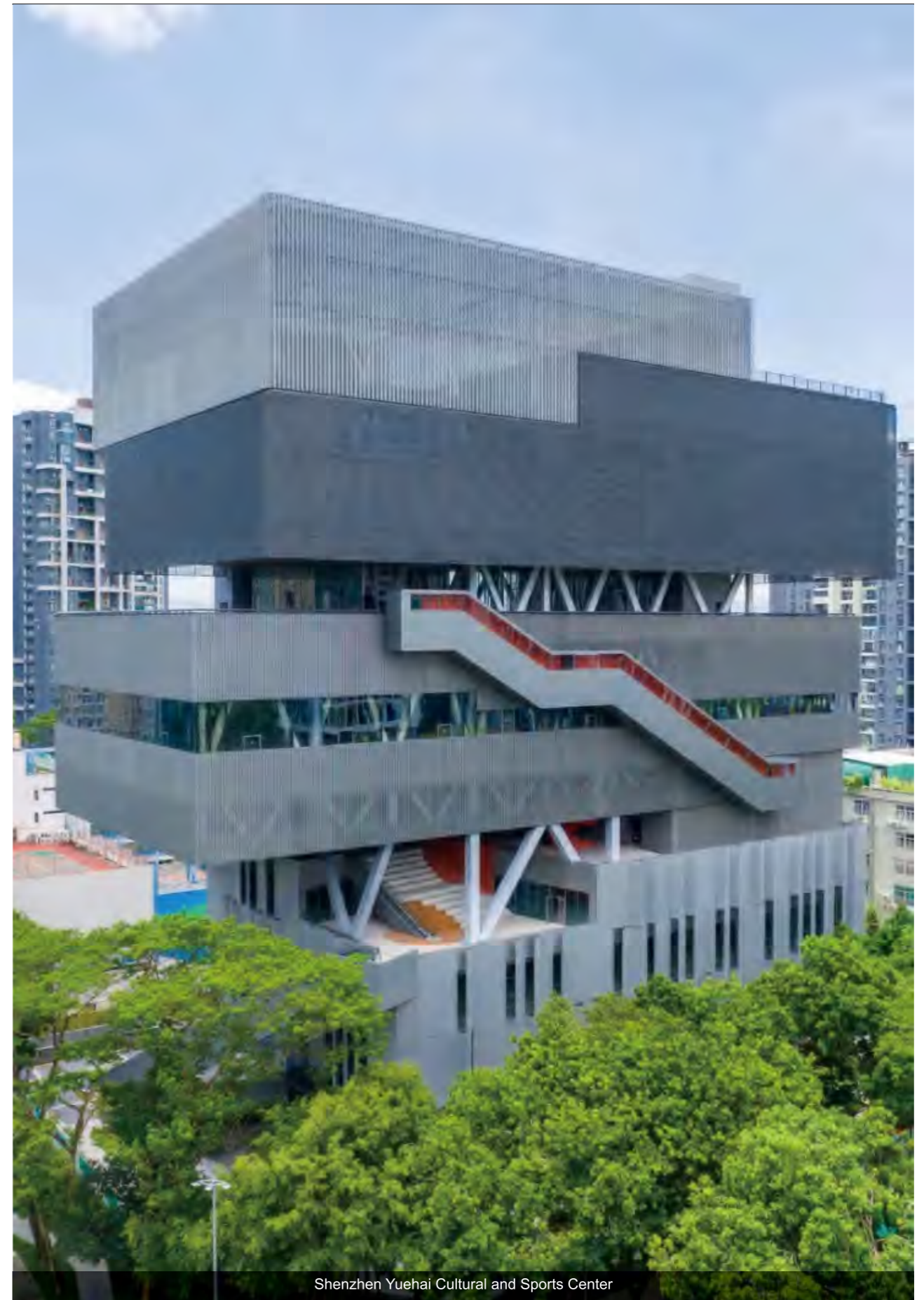
Jilin Province Changchun Airport Kindergarten



Beijing Daxing No.1 Middle School



Xiqiao South China International Textile City



Shenzhen Yuehai Cultural and Sports Center



02. SIDING PLANK

Siding Plank, is also known as weatherboard. It is a fiber cement board with a unique cedar wood grain pattern.

- Low expansion and shrinkage
- Fire resistance
- Moisture resistance
- Weather resistance
- Thermal insulated
- Long life

Application

1. Cladding in low-rise building, especially American country design
2. An excellent cladding material in architectural design
3. Architecture with specific aesthetic needs
4. Decorative effect of buildings and enhance the strong sense of line and the layer of the exterior wall

Product information

Name	Siding Plank
Size	3050×192mm、3050×200mm
Thickness	7.5、9mm
Color	It can be fiber cement color or primed painting in our factory according to the architectural decoration needs.

▲Please contact us for other dimensions.

Monochrome ↓



Two-tone ↓



Siding Plank Technical Properties

Item	Index
Density	≥1.25 g/cm³
Bending Strength(Water Saturated)	≥12 MPa
Bending Strength(Oven Dry)	≥16 Mpa
Water Absorption(Fiber Cement Color)	≤38 %
Moisture Movement	≤0.25 %
Thermal Conductivity	≤0.30 W/(m·k)
Water Impermeability	Pass
Non-combustibility	ASTM C1186
Freeze-thaw Cycles	Pass
Heat Rain Resistance	Pass
Warm Water	Pass
Soak-dry	Pass
Water Tightness	Pass
Radioactivity	Ir<1.0 ; Ir<1.0
Asbestos Content	100% Asbestos free



Heilongtan Changdao International Tourism Resort



Chengdu Vanke Villa



Huizhou Golf Resort



Pearl River International Real Estate



Huizhou Wugang Hallstatt Town



Guangxi Guilin Yanshan Cultural Tourism City



Hunan Zhengyuan Real Estate



03.

DECKING PLANK

Decking Plank is inorganic fiber cement board with natural wood grain for outdoor floor. It is an ideal choice to replace traditional antiseptic wood and WPC.

- Beautiful and practical
- Anti-skid
- Wear resistance
- Fire resistance
- Moisture resistance
- Anti-corrosion
- Weather resistant
- Durable

Application

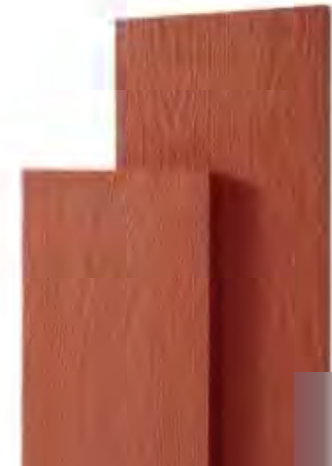
1. Outdoor decking for landscape architecture and scenic area
2. Floor panels for commercial and residential building

Product information

Name	Decking Plank
Size	3000×200mm、3000×300mm
Thickness	24mm
Color	Carmine、Plain、Latte

▲Please contact us for other dimensions.

Decking plank Color↓



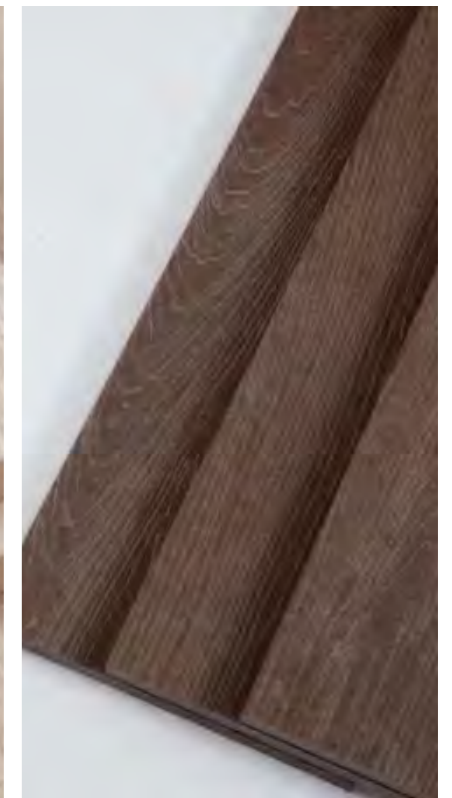
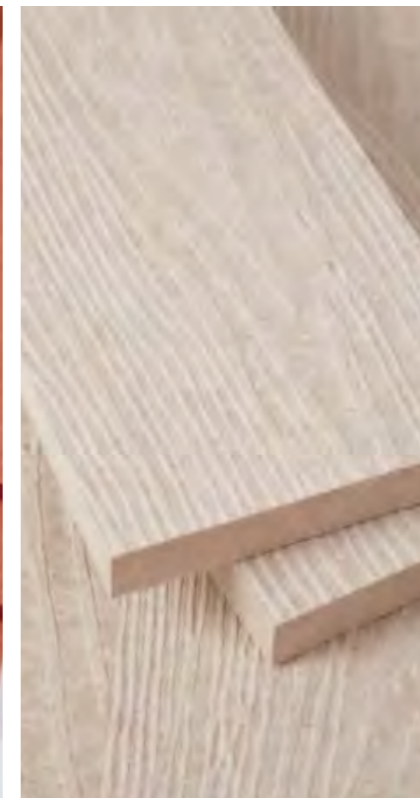
Carmine



Plain



Latte

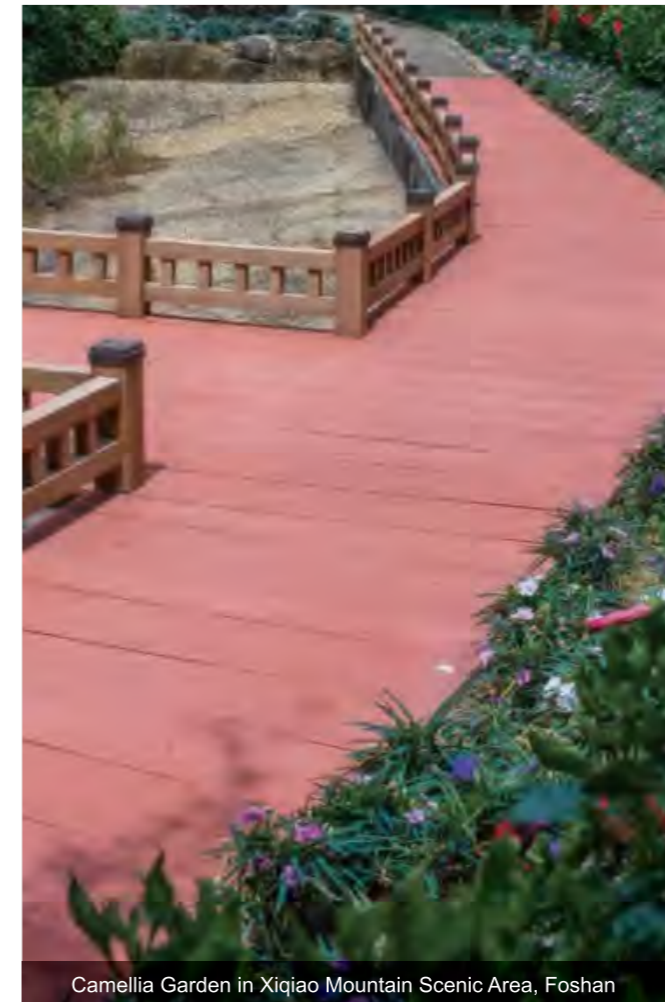


Decking Plank Technical Properties

Item	Index
Density	≥1.40 g/cm ³
Bending Strength(Water Saturated)	≥14 MPa
Water Absorption	≤28 %
Moisture Movement	≤0.25 %
Anti-skid Value	≥35 BPN
Abrasion Resistance	≤0.15 g/100r
Water Impermeability	Pass
Non-combustibility	Class A1
Freeze-thaw Cycles	Pass
Heat Rain Resistance	Pass
Warm Water	Pass
Soak-dry	Pass
Impact Resistance	Pass
Concentrated Load	≥500 kg
Uniform Load	≥800 kg
Radioactivity	Ira<1.0 ; Ir<1.0
Asbestos Content	100% Asbestos free



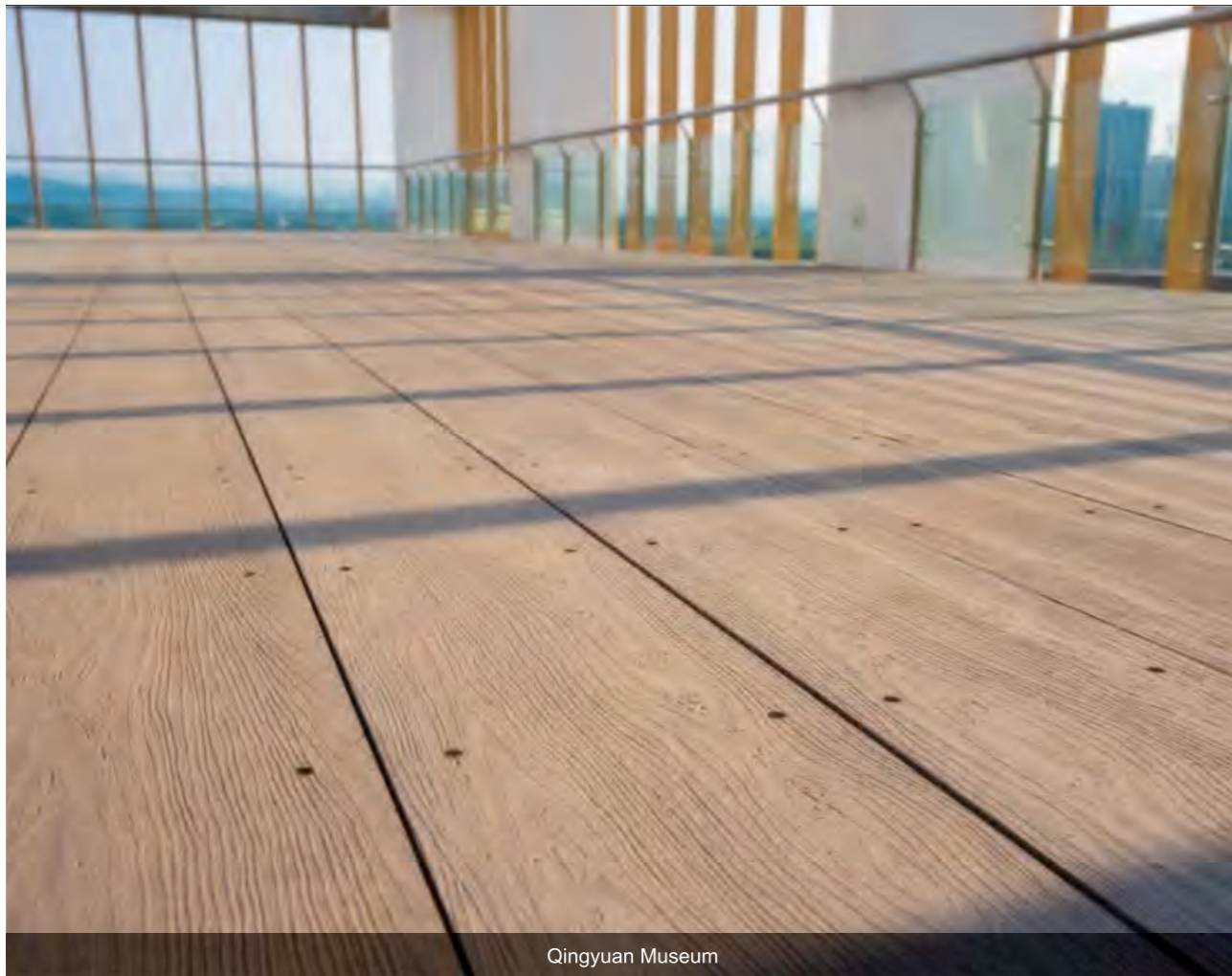
Xiqiao Huanshan Avenue



Camellia Garden in Xiqiao Mountain Scenic Area, Foshan



Camellia Garden in Xiqiao Mountain Scenic Area, Foshan



Qingyuan Museum



Xiasha Tourism Resort, Fuzhou City, Fujian Province



Southern Manganese's Daxin Mine Area Observation Deck



Ark Homestay in Haishou Island



Xian Silver Lake, Foshan, Guangdong Province



04.

PROTECTPAN

Protectpan is a low density professional fire calcium silicate board for structure protection.

- Mothproof
- Stable dimension
- Low thermal conductivity
- Light weight and easy cutting
- High temperature resistance up to 1200°C

Application

1. Tunnel protection
2. Fire damper
3. Fire partition
4. Fire ceiling
5. Ductwork
6. Structural steel protection
7. E&M enclosures
8. Fire door
9. External cladding fire protection

Product information

Name

Protectpan

Size

3050×1220mm、2440×1220mm

Thickness

9、10、12、15、24、25、27.5mm

▲Please contact us for other dimensions.

Protectpan Technical Properties

Item	Index
Density	≤0.95 g/cm ³
Bending Strength(Oven Dry)	≥6.0 MPa
Moisture Movement	≤0.25 %
Water Content	≤10 %
Thermal Conductivity	≤0.20 W/(m·k)
Flexural Strength	Pass
Non-combustibility	EN 13501 ; ASTM E136 ; ASTM E84; BS 476;
Thermal Shrinkage (600°C,3h)	≤0.5 %
High Temperature Performance (900°C,3h)	Length and width shrinkage ≤2.5 %
Radioactivity	Ira<1.0 ; Ir<1.0
Asbestos Content	100% Asbestos free





05.

STARPAN

Starpan is fire rated medium density fiber cement board for indoor partition and ceiling in civil construction.

- Fireproof
- High temperature resistance
- Thermal insulated
- Moisture proof and mothproof
- Low thermal conductivity

Application

1. Indoor partition and ceiling for civil and industrial building
2. Fire wall with sound insulation

Product information

Name

Starpan

Size

3050×1220mm、2440×1220mm

Thickness

6、8、9、10、12、15mm

▲Please contact us for other dimensions.

Starpan Technical Properties

Item	Index
Density	1.05-1.20 g/cm ³
Bending Strength(Oven Dry)	≥10 MPa
Moisture Movement	≤0.25 %
Water Content	≤10 %
Thermal Conductivity	≤0.20 W/(m·k)
Non-combustibility	AS 1530 ; BS 476
Thermal Shrinkage (600°C,3h)	≤0.95 %
Radioactivity	Ira<1.0 ; Ir<1.0
Asbestos Content	100% Asbestos free

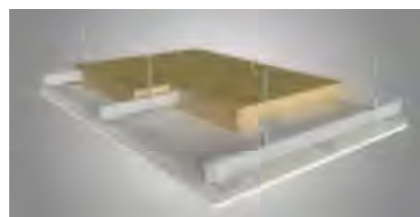


Notice

Nearly all types of decorative coating are suitable for the surface of Protectpan. However, expect fire-proof silicate coatings, other types of coating or decoration are not suggested to be used on Protectpan and its system. Follow our instruction for the system and the accessories to make sure the system work well.



Fire Rating Wall



Fire Rating Ceiling System



Tunnel Fireproof Lining System



Fire Exhausted Smoke Ducting



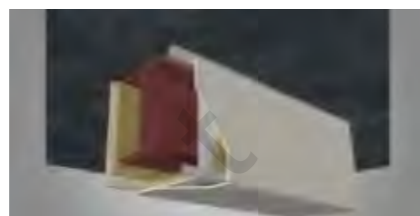
FRCSB-prefabricated Ducting System



Fire Rating Ceiling System



Steel Column Fire Protection Wrapping



Steel Beam Fire Protection Wrapping



E&M Protection / Cable Fire Protection Wrapping



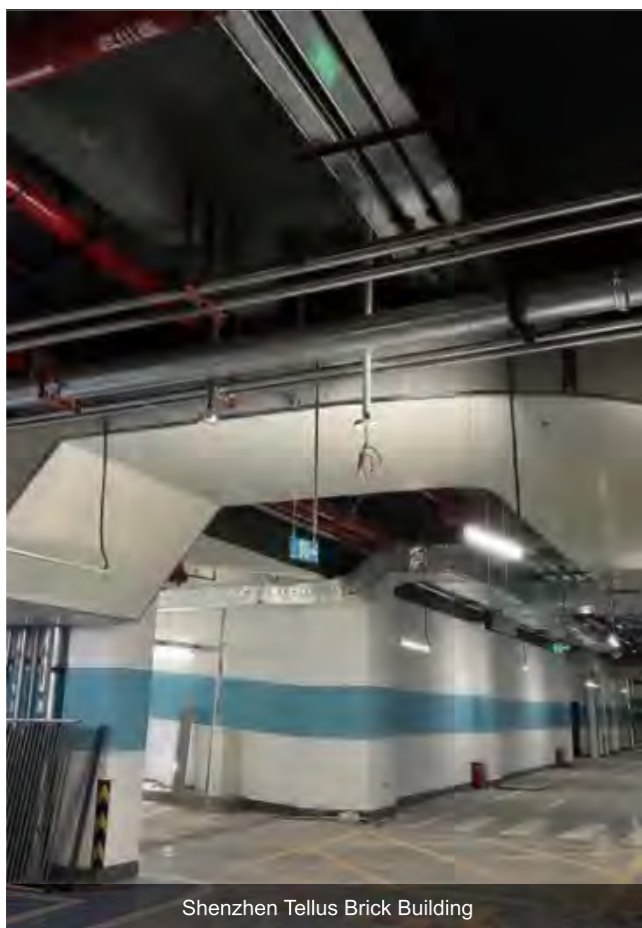
Prologis Shunde Chencun Logistics Park



Beijing Pangu Plaza



Beijing JA Solar Fireproof Steel Beam Project



Shenzhen Tellus Brick Building



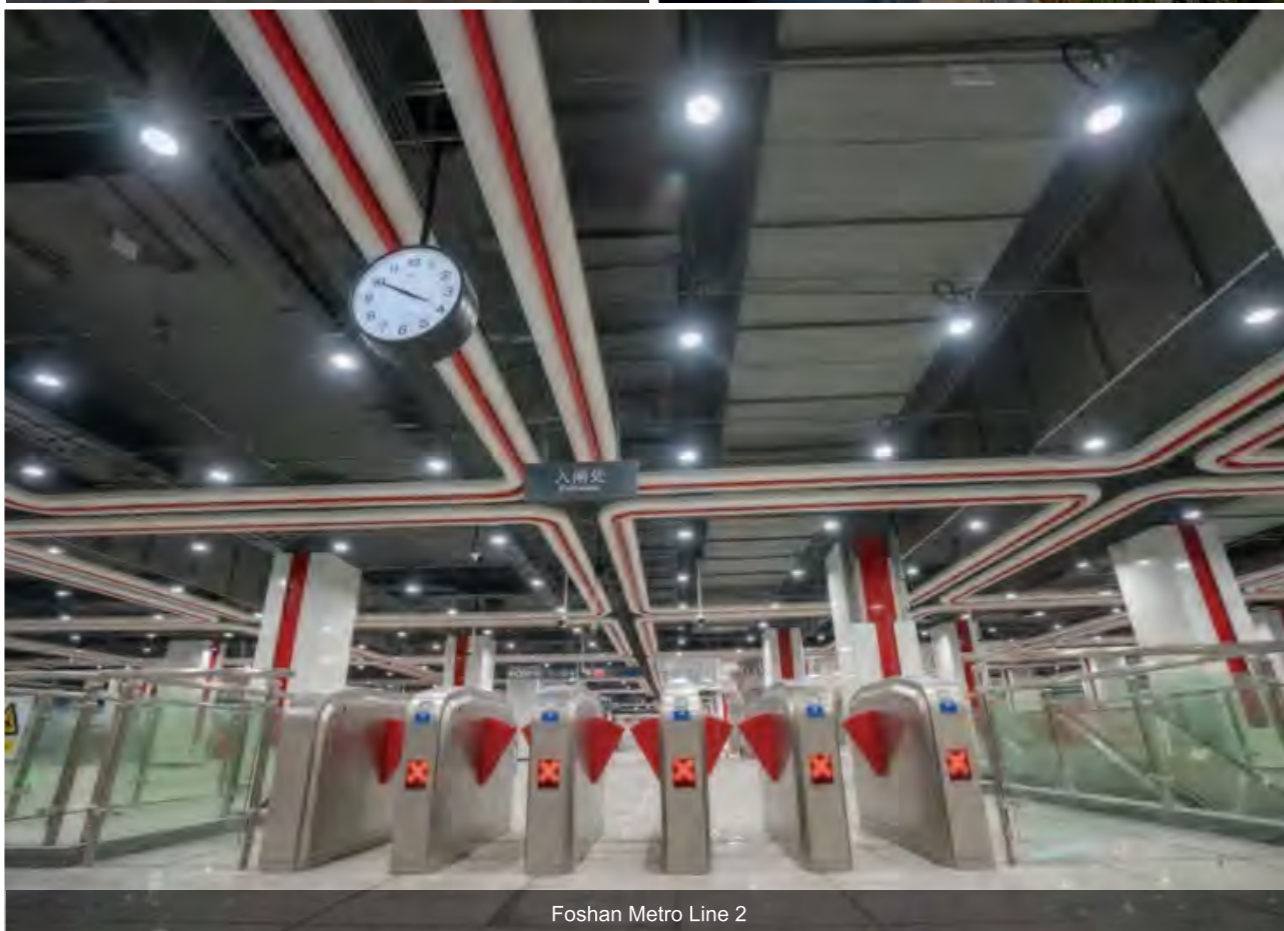
Nanning International Airport



Jiangxi Aixi Lake Tunnel



Taihu Tunnel



Foshan Metro Line 2



Haikou Wenming East Road Tunnel



06.

BLASTBORAD

It is a fire rated panel composed with an energy-absorbing fiber cement core, with outer layers of 0.5mm perforated galvanized steel bonded to the two surfaces of the core.

- High moisture resistance
- Strong impact resistance
- Fire resistance and explosion resistance
- Anti-collision and anti-bending
- Easy to install and disassemble
- Recyclable

Application

1. Inflammable and explosive areas in the industrial field
2. The new, expanded and renovated factory and warehouse
3. Separate partition for explosive materials in the factory and warehouse
4. Construction site fencing
5. Load bearing floor for equipments

Product information

Name

Blastboard

Size

2400×1200mm

Thickness

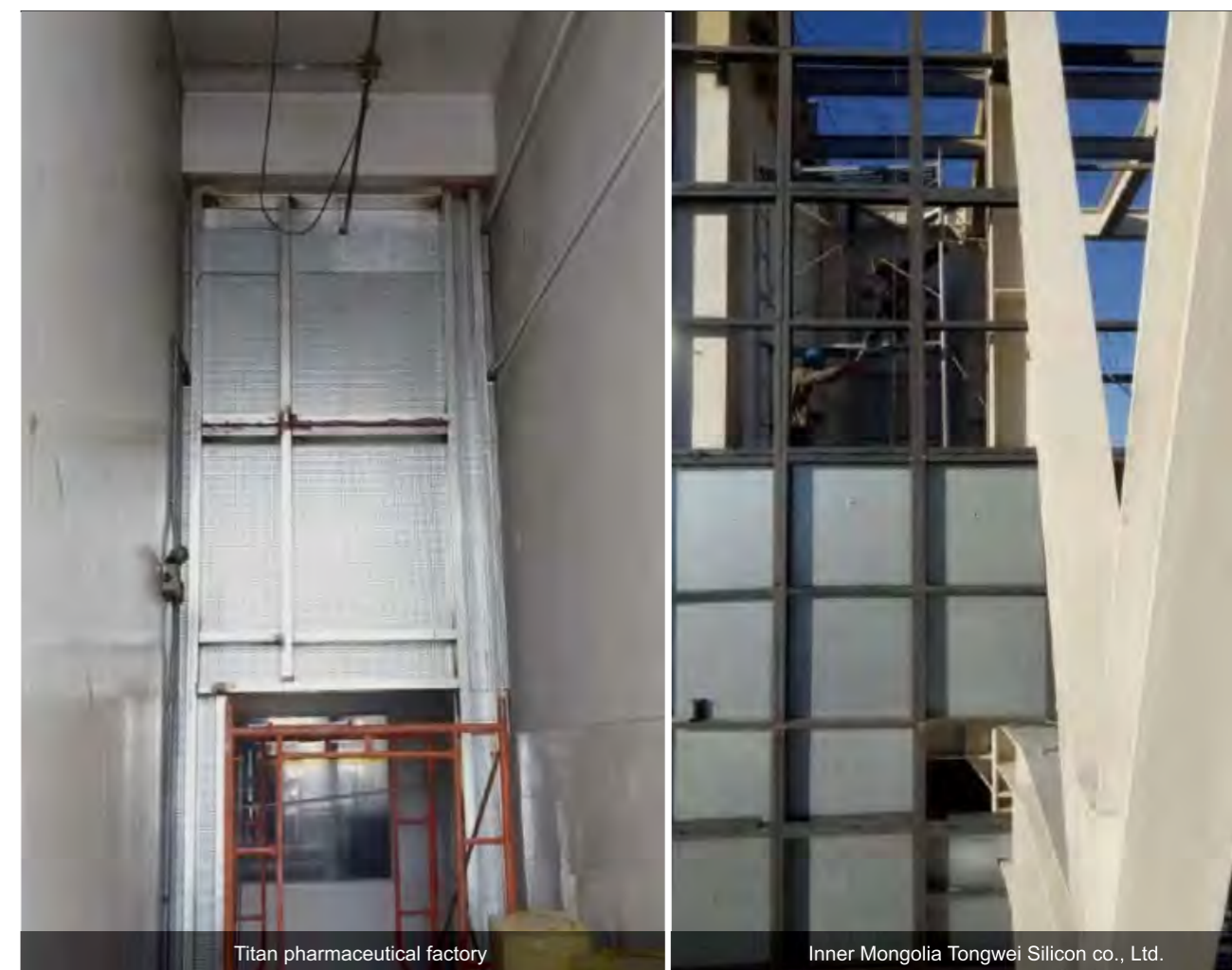
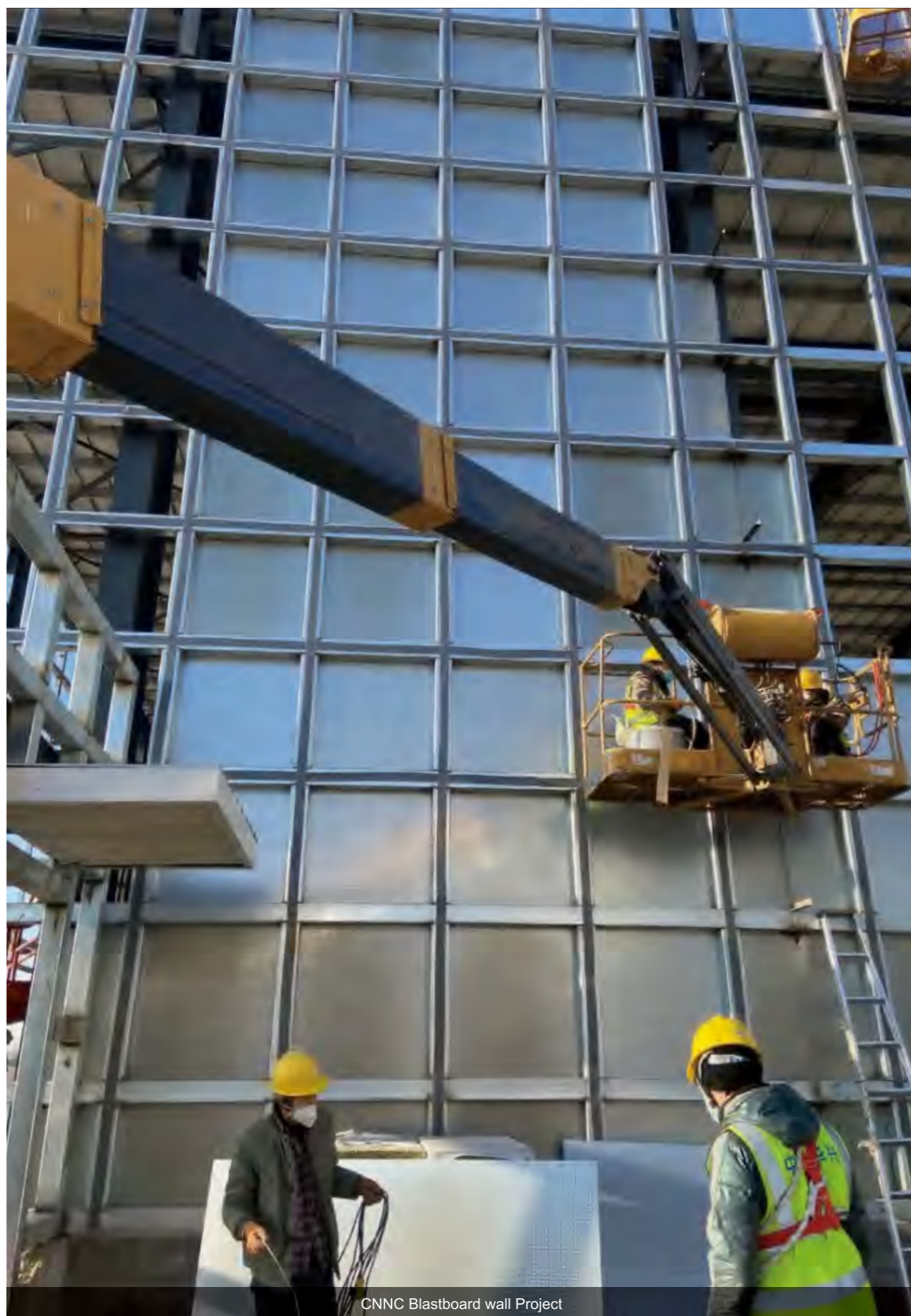
9.5mm

▲Please contact us for other dimensions.

Blastboard Technical Properties

Item	Index	
Apparent Density	>21 Kg/m ²	
Water Content	≤10 %	
Static Bending Strength	≥80 Mpa	
Elastic Modulus Strength	≥24000 Mpa	
Flexural Strength	≤1.5 x 10 ⁻⁵ °C ⁻¹	
Thermal Conductivity	≤0.20 W/(m·k)	
Environmental Protection	Asbestos Content	100% Asbestos free
	Radioactivity I _{Ra}	≤0.5
	Radioactivity I _r	≤0.5
Non-combustibility	Class A1	
Remark	Blastboard component: 0.5mm galvanized steel board +8.5mm fiber cement board +0.5mm galvanized steel board. Please contact us if you need more technical index.	







07.

CHERRYPAN

Cherrypan is a moisture resisting medium density fiber cement board, which is the carefree choice for indoor ceiling and partition.

- Moisture proof
- Mildew proof and mothproof
- Sound insulated
- High anti-impact

Application

1. Indoor ceiling and partition for moisture proof and fire proof in humid area
2. Internal insulated base board in the modern construction
3. High requirement of privacy and sound insulation in civil and industrial construction

Product information

Name

Cherrypan

Size

2440×1220mm

Thickness

6、 8、 9、 10、 12、 15、 18、 20mm

▲Please contact us for other dimensions.

Cherrypan Technical Properties

Item	Index
Density	≥1.20 g/cm ³
Bending Strength(Oven Dry)	≥12 MPa
Moisture Movement	≤0.25 %
Thermal Conductivity	≤0.30 W/(m·k)
Water Content	≤10 %
Water Impermeability	Pass
Water Resistance	Pass
Warm Water	Pass
Moisture Movement	Pass
Soak-dry	Pass
Non-combustibility	AS 1530 ; EN 13501
Radioactivity	Ira<1.0 ; Ir<1.0
Asbestos Content	100% Asbestos free

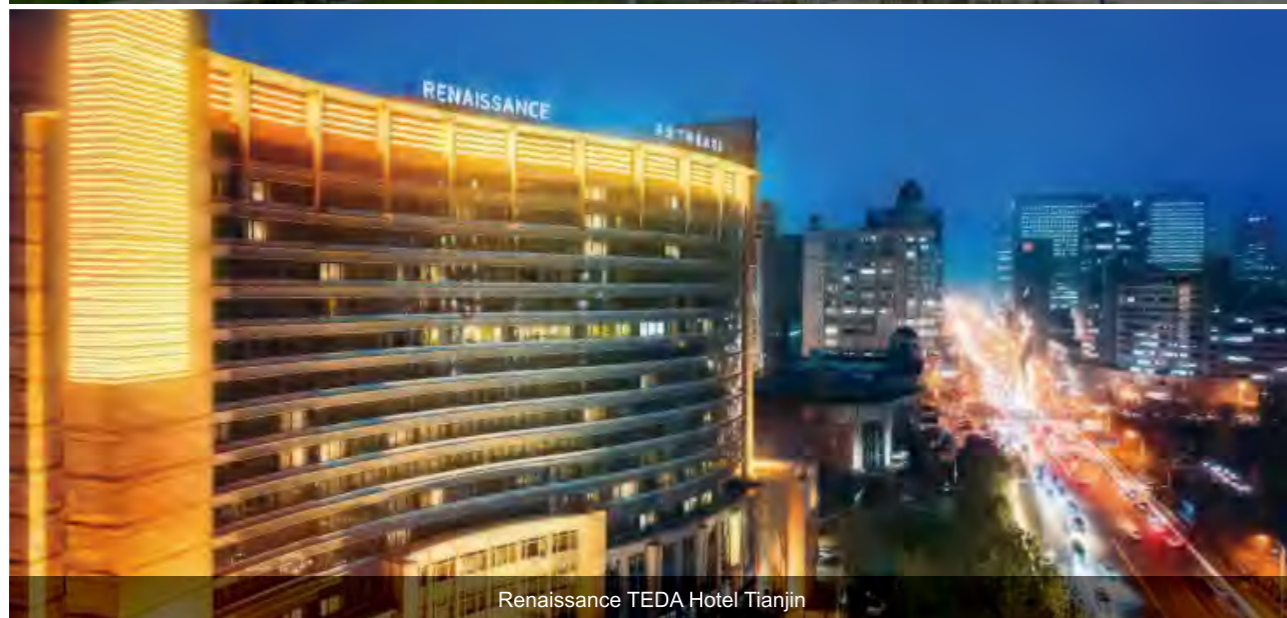




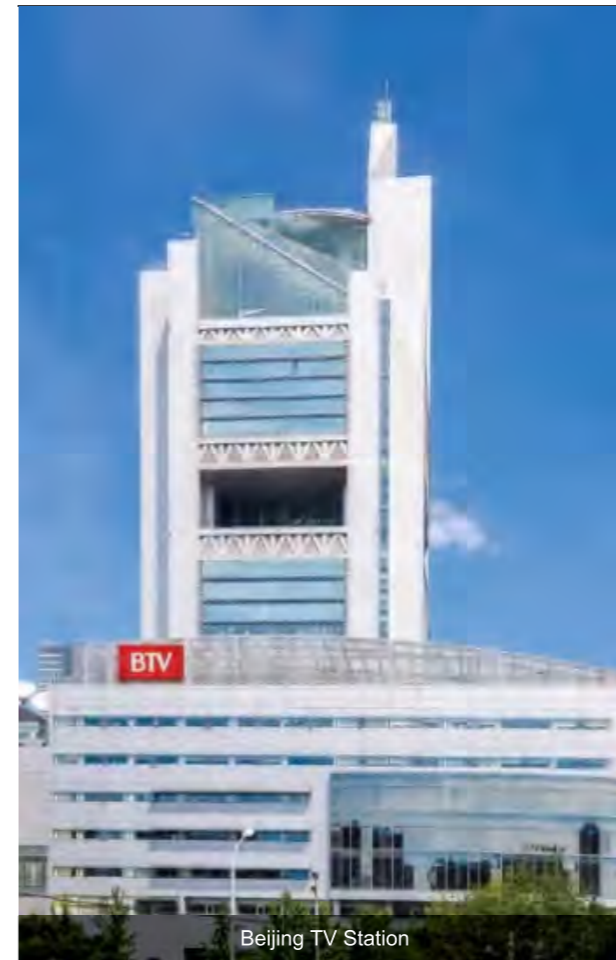
China National Convention Center



Guangzhou Asian Games Village



Renaissance TEDA Hotel Tianjin



Beijing TV Station



Dongguan Home Expo Center



Gaoming Sailing Hotel



08.

BUYERPAN

Buyerpan is a multi-purpose fiber cement board for indoor ceiling and partition with light weight but high thermal insulation performance.

- Mildew proof and mothproof
- Thermal insulated
- Balance the humidity in the air

Application

1. False ceiling in civil and commercial construction
2. The renovation of old building. It can be left plain or easily finished by paints, wallpaper etc

Product information

Name

Buyerpan

Size

2440×1220mm

Thickness

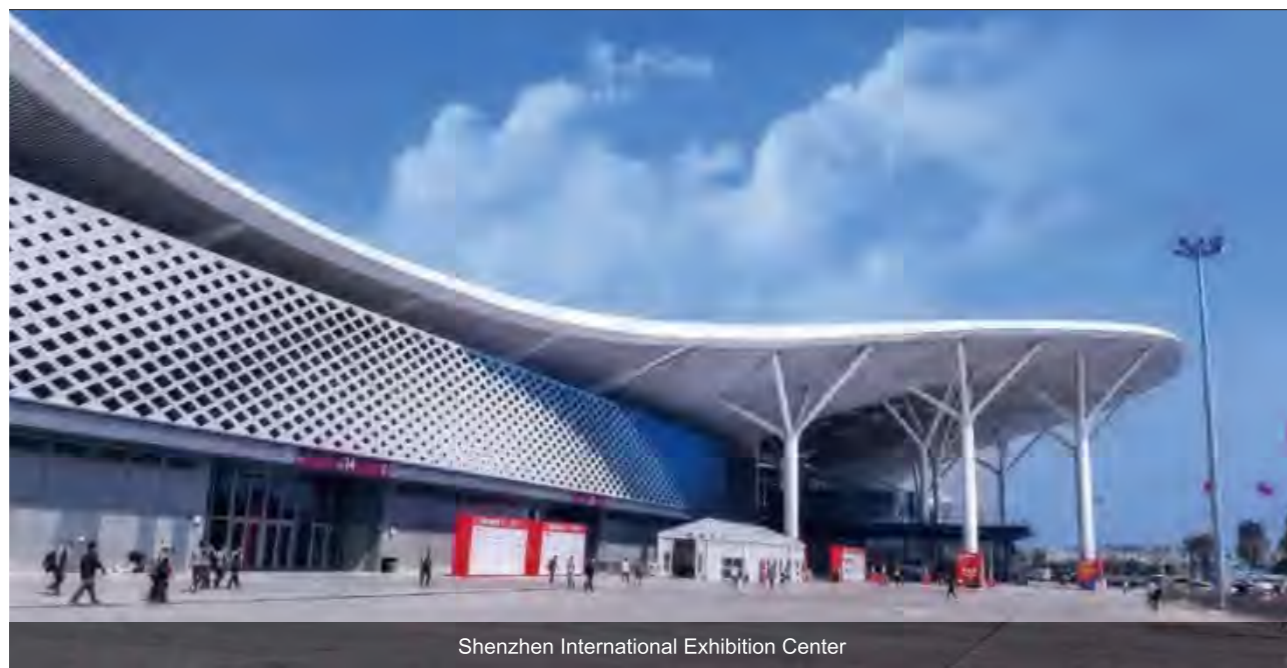
6、 8、 9、 10、 12、 15mm

▲Please contact us for other dimensions.

Buyerpan Technical Properties

Item	Index
Density	1.00-1.15 g/cm ³
Bending Strength(Oven Dry)	≥9 MPa
Moisture Movement	≤0.25 %
Thermal Conductivity	≤0.25 W/(m·k)
Water Content	≤10 %
Non-combustibility	BS476
Radioactivity	Ira<1.0 ; Ir<1.0
Asbestos Content	100% Asbestos free

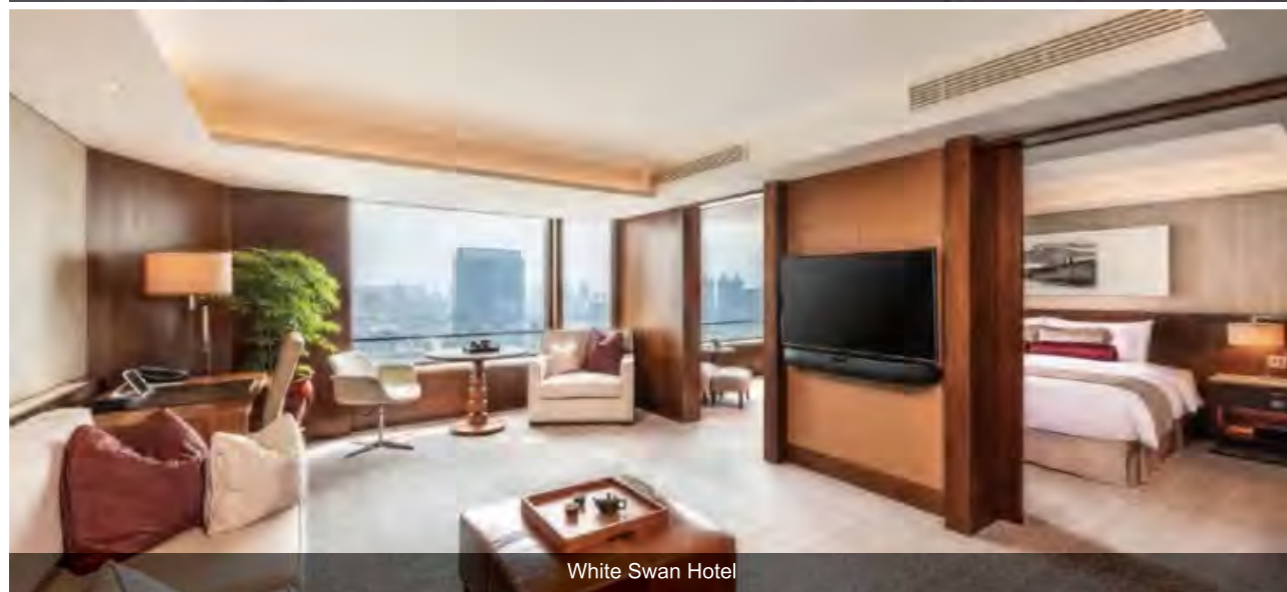




Shenzhen International Exhibition Center



Dongguan Jiahua Hotel



White Swan Hotel



Dongguan Kanghua Hospital



China Life Tower



Yangjiang Haiyun Days Hotel



09.

FLOORSLABER

Floorslaber is a fiber cement board that can be used as interlayer floor with light weight, high strength and high flatness.

- Loft design
- Non-combustible and non-radioactive
- Full dry operation
- Easy installation

Application

1. Office buildings, commercial buildings and other steel structure floor
2. A good choice to replace the traditional corrugated steel plate plus concrete floor
3. Internal underlay for ceramic tiles, carpets or wood finish
4. Used for storey-adding commercial and residential buildings

Product information

Name

Floorslaber

Size

2440×1220mm

Thickness

24mm

▲Please contact us for other dimensions.

Floorslaber Technical Properties

Item	Index
Density	1.20-1.35 g/cm ³
Bending Strength(Oven Dry)	≥12 MPa
Concentrated Load	≥500 kg
Uniform Load	≥800 kg
Water Content	≤10 %
Moisture Movement	≤0.25 %
Thermal Conductivity	≤0.30 W/(m·k)
Non-combustibility	AS 1530 ; EN 13501
Radioactivity	Ira<1.0 ; Ir<1.0
Asbestos Content	100% Asbestos free





Kishan Washington

Papua New Guinea Villa



Papua New Guinea Villa



Integrated building box room



Papua New Guinea Villa



10.

BACKERPAN

Backerpan is a special developed fiber cement board with unique embossing surface to improve better bonding with other adhesive materials. It is a perfect backer board for wet area applications.

- Waterproof and moisture proof
- Mildew proof and antibacterial
- Fire resistance
- Anti-corrosion and anti-termite
- Easy installation

Application

1. Internal wall in wet areas where flat surface is required for tiles, wallpaper or paint

Product information

Name

Backerpan

Size

2440×1220mm

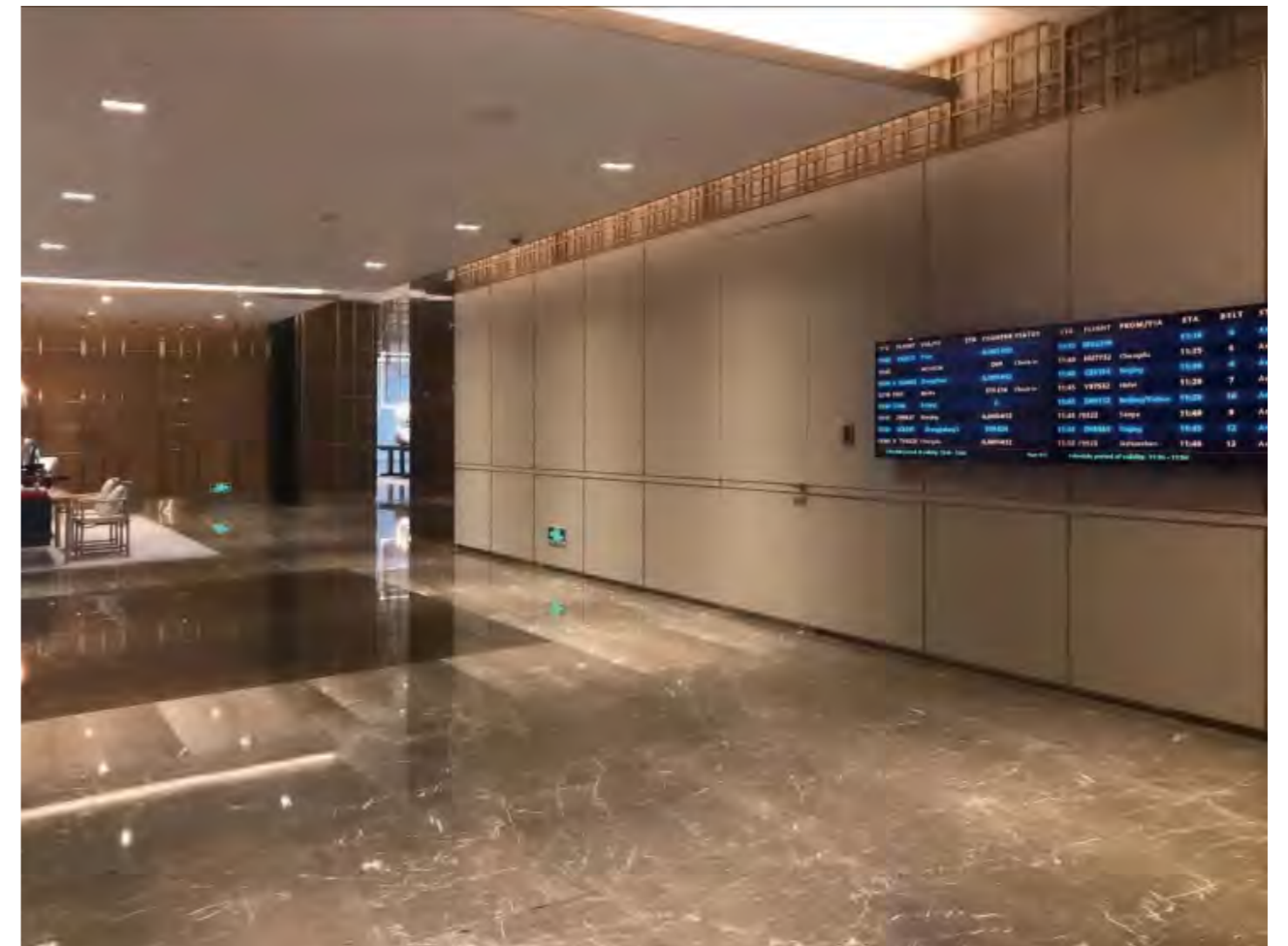
Thickness

9、12mm

▲Please contact us for other dimensions.

Backerpan Technical Properties

Item	Index
Density	1.25-1.35 g/cm ³
Bending Strength(Oven Dry)	≥14 MPa
Moisture Movement	≤0.25 %
Water Content	≤10 %
Thermal Conductivity	≤0.30 W/(m·k)
Non-combustibility	Class A1
Radioactivity	Ira<1.0 ; Ir<1.0
Asbestos Content	100% Asbestos free





Shenzhen Airport Hyatt Hotel



AVIC Engine Industrial Park



Ibis Huizhou Xunliao Bay Hotel



Zhengzhou Futures Building



Qianxi Square, Zhengzhou Greenland Center

Transportation and Storage

Before delivery, the boards should be packed in the way of board-to-board, which is suitable for vessel, truck and air transportation as well as indoor storage.

The boards must be stored in a dry, ventilated and clean warehouse. To avoid moisture before used, plastic bag is recommended to cover the boards.

Storage

- ⦿ The floor should be flat. The height of each stack should be $\leq 800\text{mm}$, and the total storing height should be $\leq 2500\text{mm}$;
- ⦿ The boards should be piled in order according to their size and type;
- ⦿ Keep the boards in a dry and ventilated warehouse.

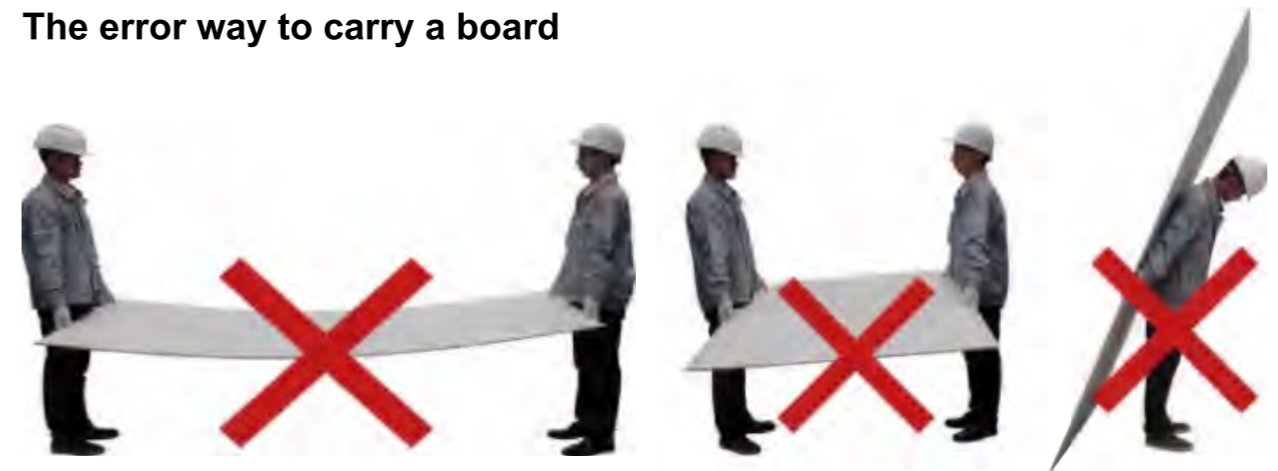


Transportation

- ⦿ Carried by one man is prohibited; the edges and corners must be well protected;
- ⦿ Two workers are needed to lift the board together. They must open their arms as much as possible and carry the long edges of the board vertically;
- ⦿ If the thickness of the board is less than 8mm, please carry two boards together.

will upgrade the index and application purpose for the product according to technological progressing, providing you the newest information. Please contact us when using this catalog.

The error way to carry a board



The suggested way to carry a board

