

# 01 INDUSTRIAL RUBBER SHEET

## 工业橡胶板系列



### GENERAL (NR/SBR) RUBBER SHEET 普通工业橡胶板



等级 Grade	硬度 Hardness ShoreA	密度 Density g/cm <sup>3</sup>	强力 Tensile strength Mpa	伸长率 Elongation %	使用温度 Temperature °C
A3	70 ± 5	1.55 ± 0.06	3.5	180	-25~+80
A4	68 ± 5	1.5 ± 0.05	4.5	200	-25~+80
A5	65 ± 5	1.45 ± 0.05	6	230	-25~+80
A6	50 ± 5	1.4 ± 0.05	5	280	-25~+80

表面Surface	光面Smooth
颜色Color	黑色Black
尺寸Size	厚度Thickness: 0.8mm~100mm 宽度Wide: 400mm~3400mm 长度Length: 可根据客户需求定制according to customers' requirements
性能Performance	良好的机械和磨损性能, 耐油, 减震 Good mechanical and wear performance, oil resistance and shock absorption.
用途Usage	可用于垫圈, 密封件, O型圈, 垫圈 It can be used for the production of gaskets, seals, O-rings, and washers.
包装Package	编织袋, 塑料膜, 托盘 Woven beg/plastic film/wood pallet.

备注/Note:

- 1 该类型产品可提供各种颜色/All The Colors Available.
  2. 该类型产品根据性能需要可以夹纱布、夹尼龙布等/Cloth Insertion、Nylon Insertion Available.
  3. 该类型产品的表面可以制成布纹效果/Cloth Impression Finish Available.
  4. 该产品性能和尺寸可根据客户需求而定/Specification And Dimention On The Customer's Request.
  5. 产品的检测试验符合ISO国际标准/The Test Methods Are Correponding With ISO Standard.
- 可根据客户性能需求设计产品配方/We Can Design The Product Formula According To All Kinds Of Specification To Satisfy Our Customers.

### RUBBER GASKET 连体垫片



材质 Quality	硬度 Hardness ShoreA	密度 Density g/cm <sup>3</sup>	强力 Tensile strength Mpa	伸长率 Elongation %
普胶垫片	75~80	1.8	2	150
EPDM垫片	75~80	1.5	2	150
灰胶垫片	75 ± 5	1.8	2	200

### CUSTOM SKIRT- BOARD RUBBER MAT 裁条板



材质 Quality	硬度 Hardness ShoreA	密度 Density g/cm <sup>3</sup>	强力 Tensile strength Mpa	伸长率 Elongation %
NR/SBR	55~75 ± 5	1.3~1.8	1.8~8	180~300

## GENERAL (NR/SBR) RUBBER SHEET 普通工业橡胶板



材质 Quality	硬度 Hardness ShoreA	密度 Density g/cm <sup>3</sup>	强力 Tensile strength Mpa	伸长率 Elongation %
Economical common rubber mat 经济型橡胶大板	62 ± 5	1.3 ± 0.05	8	260
Economical common rubber mat 经济型橡胶大板	60 ± 5	1.35 ± 0.05	6.5	250
Economical common rubber mat 经济型橡胶大板	65 ± 5	1.4 ± 0.05	6	250
Economical common rubber mat 经济型橡胶大板	65 ± 5	1.45 ± 0.05	5	250
Economical common rubber mat 经济型橡胶大板	65 ± 5	1.5 ± 0.05	4	200
Economical common rubber mat 经济型橡胶大板	65 ± 5	1.5 ± 0.05	5	200
Economical common rubber mat 经济型橡胶大板	70 ± 5	1.6 ± 0.05	2.5	200
Economical common rubber mat 经济型橡胶大板	70 ± 5	1.7 ± 0.05	2	200
Grade A Industrial rubber sheet 工业橡胶板	70 ± 5	1.8 ± 0.05	2	180

<b>尺寸Size</b>	厚度Thickness:0.8mm~100mm 宽度Wide: 30mm~3400mm 长度Length: 可根据客户需求定制 according to customers' requirments
<b>温度Temperature</b>	-25° C ~ 80° C
<b>颜色Color</b>	黑色black
<b>性能Performance</b>	防水、防震、密封性 Water-proof, shock-proof and sealing.
<b>用途Usage</b>	密封件、橡胶圈及地面铺设 It can be used for sealing parts, rubber rings and flooring.

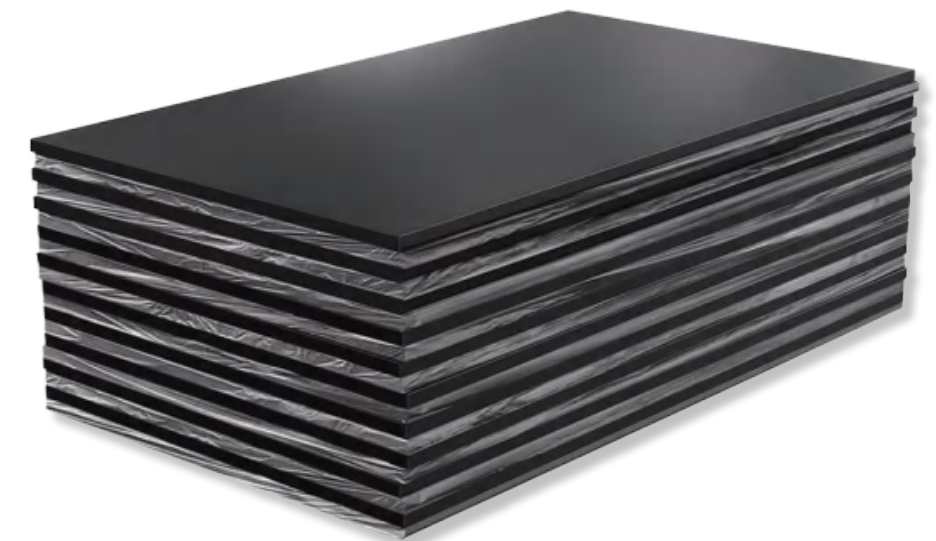
- 备注/Note:
1. 该类产品可提供各种颜色/All The Colors Available.
  2. 该类产品根据性能需要可以夹纱布、夹尼龙布等/Cloth Insertion、Nylon Insertion Available.
  3. 该类型产品的表面可以制成布纹效果/Cloth Impression Finish Available.
  4. 该产品性能和尺寸可根据客户需求而定/Specification And Dimention On The Customer's Request.
  5. 产品的检测试验符合ISO国际标准/The Test Methods Are Correponding With ISO Standard.
  6. 可根据客户性能需求设计产品配方/We Can Design The Product Formula According To All Kinds Of Specification To Satisfy Our Customers.

## ECONOMICAL INDUSTRIAL RUBBER SHEET 经济型工业橡胶板



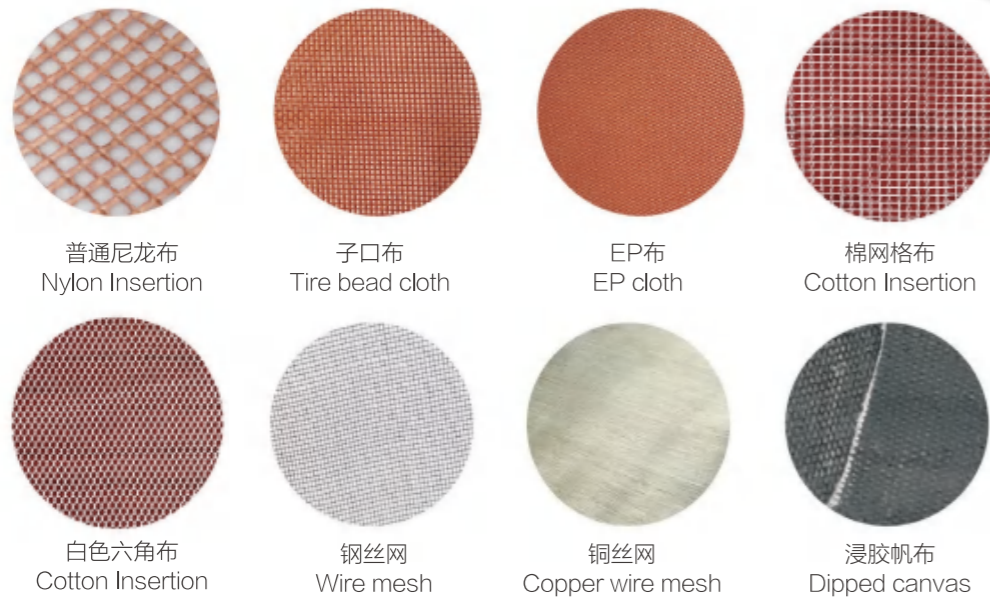
材质 Quality	硬度 Hardness ShoreA	密度 Density g/cm <sup>3</sup>	强力 Tensile strength Mpa	伸长率 Elongation %
Economical common rubber mat 经济型橡胶大板	65 ± 5	1.5~1.6	2.5~3	200

## ECONOMICAL INDUSTRIAL RUBBER MAT 经济型工业橡胶大板



材质 Quality	尺寸 Size	硬度 Hardness ShoreA	密度 Density g/cm <sup>3</sup>	强力 Tensile strength Mpa	伸长率 Elongation %
Economical common rubber mat 经济型橡胶大板	1mX2m	65 ± 5	1.5~1.6	2.5~3	200

## CLOTH INSERTION RUBBER SHEET 夹布胶板



<b>参数Parameter</b>	密度Density : 1.2~1.8g/cm <sup>3</sup> 伸长率Elongation:35~90% 拉伸强度Tensile Strength : 2.5~20mpa 硬度Hardness: 35~80shore-A
<b>尺寸Size</b>	厚度Thickness: 1.5~100mm    宽度Width:30~2000mm    长度可根据客户需求定制 Length can be customized according to customer needs
<b>颜色Color</b>	黑、红、绿、灰等多种色泽供你选择 Black, red, green, gray and other colors for your choice
<b>性能Performance</b>	在油类（机油、柴油、汽油、润滑油）介质中工作，具有密封性和抗膨胀性 Work in oil (motor oil, diesel, gasoline, lubricating oil) medium, with sealing and anti-expansion properties
<b>用途Usage</b>	冲制各种耐油类油封、密封件、圈、与油脂类接触的工作台面、地面、电子类产品场所的铺设 Punching all kinds of oil-resistant oil seals, seals, rings, work surfaces in contact with grease, floors, and laying of electronic products

## COLOR RUBBER SHEET 彩色橡胶板



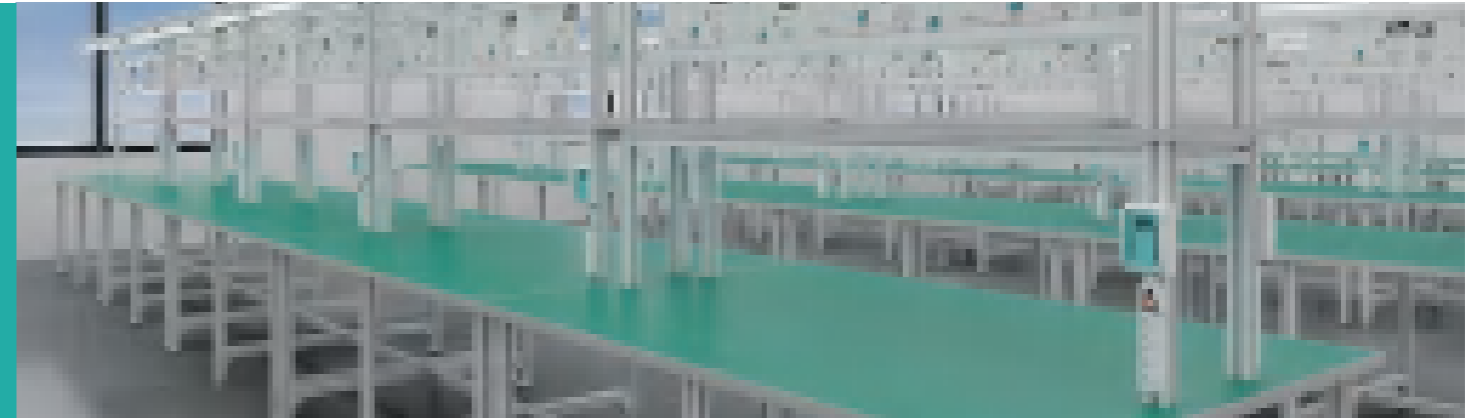
材质Quality	硬度Hardness ShoreA	密度Density g/cm <sup>3</sup>	强力Tensile strength Mpa	伸长率Elongation %
彩色橡胶板 Color rubber sheet	70±5	1.8±0.05	2	250
	75±5	1.7±0.05	3	300
	60±5	1.6±0.05	4	300
	60±5	1.5±0.05	5	400

<b>尺寸Size</b>	厚度Thickness:0.8mm~100mm    宽度Wide: 30mm~3000mm 长度Length: 可根据客户需求定制    according to customers' requirements
<b>温度Temperature</b>	-25℃ ~ 80℃
<b>颜色Color</b>	可提供各种颜色 All the colors available
<b>性能Performance</b>	防水、防震、密封性 Water-proof, shock-proof and sealing
<b>用途Usage</b>	密封件、橡胶圈及地面铺设 It can be used for sealing parts, rubber rings and flooring

备注/Note:

1. 该类型产品可提供各种颜色/All The Colors Available.
2. 该类型产品根据性能需要可以夹纱布、夹尼龙布等/Cloth Insertion、Nylon Insertion Available.
3. 该类型产品的表面可以制成布纹效果/Cloth Impression Finish Available.
4. 该产品性能和尺寸可根据客户需求而定/Specification And Dimension On The Customer's Request.
5. 产品的检测试验符合ISO国际标准/The Test Methods Are Corresponding With ISO Standard.
6. 可根据客户性能需求设计产品配方/We Can Design The Product Formula According To All Kinds Of Specification To Satisfy Our Customers.

# 02 SPECIAL RUBBER SHEET SERIES 特种橡胶板系列



## ELECTRICAL RUBBER SHEET 电气级绝缘橡胶板

<b>参数 Parameter</b>	密度Density: 1.8~1.5±0.05g/cm <sup>3</sup> 拉伸强度Tensile Strength: 2.0~5MPA 伸长率Elongation: 180~300% 硬度Hardness: 65~73±5shore-A
<b>尺寸 Size</b>	厚度Thickness:3-80mm 宽度Width:30-3000mm 长度可根据客户需求定制 Length can be customized according to customer needs.
<b>颜色 Color</b>	黑色或其他各种颜色 Black or any other color
<b>性能 Performance</b>	在介电环境中工作, 最大绝缘电压10万伏 Work in the conductive surroundings, the maximum insulation voltage can reach 100000V
<b>用途 Usage</b>	可用于变电站、发电站和配电站 It can be used for transformer station, power plant and electricity distributing station

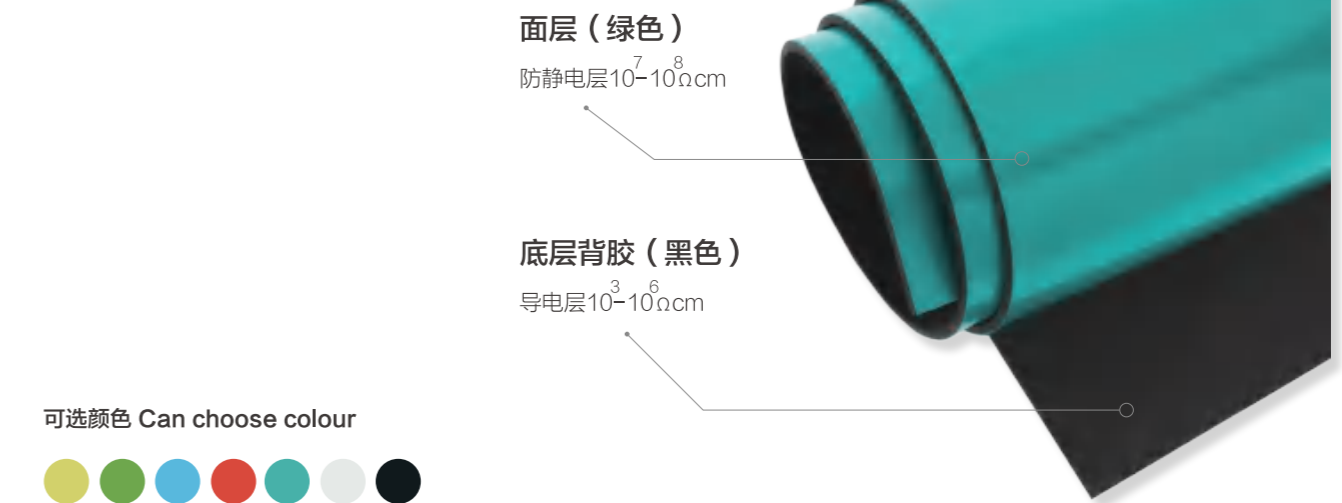


## ELECTRICAL RUBBER SHEET 彩色绝缘条纹橡胶垫——配电站专用

厚度thickness	耐压范围Pressure resistant	颜色color
3mm	5KV	可根据客户要求定制 颜色、尺寸、花纹 Color, size and pattern can be customized according to customer requirements
4mm	10KV	
5mm	15KV	
6mm	20KV	
8mm	25KV	
10mm	30KV	



## ANTI-STATIC (ESD) RUBBER SHEET 防静电橡胶板



<b>参数 Parameter</b>	上层绿面 Green Side: 密度Density: 1.3±0.05g/cm <sup>3</sup> 拉伸强度Tensile Strength: 6MPA 伸长率Elongation: 300% 硬度Hardness: 70±5shore-A 体积电阻率 Volume Resistance: 10 <sup>7</sup> -10 <sup>9</sup> Ω·cm
	底层黑面 Black Side: 密度Density: 1.55±0.05g/cm <sup>3</sup> 拉伸强度Tensile Strength: 3MPA 伸长率Elongation: 180% 硬度Hardness: 75±5shore-A 体积电阻率 Volume Resistance: 10 <sup>3</sup> -10 <sup>6</sup> Ω·cm
<b>尺寸 Size</b>	厚度Thickness: 1.8-50mm 宽度Width: 500-1400mm 长度可根据客户需求定制 Length can be customized according to customer needs
<b>颜色 Color</b>	上层绿/灰/蓝色, 下层黑色 Green/black or grey/black
<b>性能 Performance</b>	弹性强、电极性好, 具有排除静电干扰 Strong elasticity, good electric polarity and eliminate the static interference
<b>用途 Usage</b>	主要用于铺垫桌面、流水线工作面台、货架及制作地垫等 It is mainly used for laying table tops, assembly line working table, shelves and making floor mats
<b>特点 Feature</b>	色彩艳丽, 耐磨性能好, 具有优良的防静电、导静电性能 Bright color, good wear resistance, excellent anti-static, electrostatic conductivity

## CONDUCTIVE RUBBER SHEET 导电胶板

参数 Parameter	密度Density: 1.4±0.05g/cm <sup>3</sup> 拉伸强度Tensile Strength :4.5MPa 伸长率Elongation:250% 硬度Hardness: 70±5shore-A 体积电阻率 Volume resistivity: ≤5×10 <sup>4</sup> Ω·cm
尺寸 Size	厚度Thickness:0.8~80mm 宽度Width:30~3000mm 长度可根据客户需求定制 Length can be customized according to customer needs
颜色 Color	黑色或其他各种颜色 Black or any other color
性能 Performance	弹性好, 具有导电作用 Good elasticity and conductive function
用途 Usage	用于电子、纺织行业 Applied in the electronics and textile industry

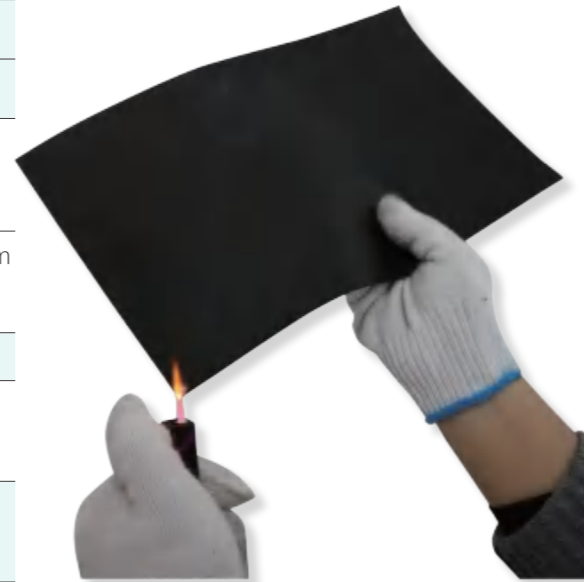


## FLAME RETARDANT RUBBER SHEET 阻燃橡胶板

### 参数 Parameter

比重 Density	拉伸强度 Tensile Strength	伸长率 Elongation	硬度 Hardness	阻燃等级 Level of flame retardant
1.8±0.05g/cm <sup>3</sup>	2MPa	180%	72±5 shore-A	V1
1.45±0.05g/cm <sup>3</sup>	7MPa	300%	65±5 shore-A	V2
1.55±0.05g/cm <sup>3</sup>	4MPa	250%	70±5 shore-A	V0

尺寸 Size	厚度Thickness: 0.8~100mm 宽度Width:30~3000mm 长度可根据客户需求定制 Length can be customized according to customer needs
颜色 Color	黑色或其他各种颜色 Black or any other color
性能 Performance	抗燃烧, 氧指数高, 离火自熄 Anti-combustion, high oxygen index, self-extinguishing from fire
用途 Usage	适用于各种防火场所及冰箱, 空调主机使用 It is suitable for all kinds of fire prevention places and refrigerators and air conditioners



## EPDM RUBBER SHEET 三元乙丙橡胶



尺寸 Size	厚度Thickness: 0.8~100mm 宽度Width:30~3000mm 长度可根据客户需求定制 Length can be customized according to customer needs
颜色 Color	黑色或其他各种颜色 Black or any other color
性能 Performance	耐老化性、耐臭氧性、电性能好、耐疲劳 aging resistance, ozone resistance, good electrical performance, fatigue resistance
用途 Usage	涵闸、桥梁工程橡胶施工、止水, 屋顶防漏及冲压胶垫 Rubber construction of sluice, bridge engineering, water stop, roof leak proof and stamping rubber pad

材质 Quality	硬度 Hardness ShoreA	密度 Density g/cm <sup>3</sup>	强力 Tensile strength Mpa	伸长率 Elongation %
经济乙丙Economical EPDM	40±5	1.2±0.05	3.5	250
经济乙丙Economical EPDM	50±5	1.3±0.05	3.5	250
经济乙丙Economical EPDM	60±5	1.4±0.05	3.5	250
经济乙丙Economical EPDM	70±5	1.4±0.05	3.5	200
商业乙丙Comercial EPDM	50±5	1.3±0.05	5	250
商业乙丙Comercial EPDM	60±5	1.4±0.05	5	250
商业乙丙Comercial EPDM	70±5	1.45±0.05	5	200
高品质乙丙High grade EPDM	65±5	1.3±0.05	8~9	≥500
高品质乙丙High grade EPDM	70±5	1.3±0.05	≥10	≥600
过氧化物乙丙橡胶板Peroxide EPDM	70±5	1.4±0.05	8	250

## NBR RUBBER SHEET 丁腈胶板



<b>尺寸 Size</b>	厚度Thickness: 0.8~100mm 宽度Width:30~3000mm 长度可根据客户需求定制 Length can be customized according to customer needs
<b>颜色 Color</b>	黑色或其他各种颜色 Black or any other color
<b>性能 Performance</b>	在油类（机油、柴油、汽油、润滑油）介质中工作，具有密封性和抗膨胀性 Working in oil (oil, diesel oil, gasoline, lubricating oil) medium, with tightness and expansion resistance.
<b>用途 Usage</b>	冲制各种耐油类油封、密封件、圈、与油脂类接触的工作台面、地面、电子类产品场所的铺设 Punch all kinds of oil resistant oil seals, seals, rings, and oil contact with the work surface, ground, electronic products place laying

材质 Quality	硬度 Hardness ShoreA	密度 Density g/cm <sup>3</sup>	强力 Tensile strength Mpa	伸长率 Elongation %
经济丁腈Economical NBR	40±5	1.2±0.05	3.5	250
经济丁腈Economical NBR	50±5	1.3±0.05	3.5	250
经济丁腈Economical NBR	60±5	1.4±0.05	3.5	250
经济丁腈Economical NBR	70±5	1.4±0.05	3.5	200
商业丁腈Comercial NBR	40±5	1.2±0.05	5	300
商业丁腈Comercial NBR	50±5	1.3±0.05	5	250
商业丁腈Comercial NBR	60±5	1.4±0.05	5	250
商业丁腈Comercial NBR	70±5	1.4±0.05	5	250
高品质丁腈 High grade NBR	70±5	1.3±0.05	≥10	300
B级耐油丁腈 B class oil resistant NBR	70±5	1.5±0.05	3-4	250
C级耐油丁腈 C class oil resistant NBR	70±5	1.45±0.05	6-7	300

## NEOPRENE RUBBER SHEET 氯丁胶板



<b>尺寸 Size</b>	厚度Thickness: 0.8~100mm 宽度Width:30~3000mm 长度可根据客户需求定制 Length can be customized according to customer needs
<b>颜色 Color</b>	黑、红、绿、灰等多种色泽供你选择。Black, red, green, gray and other colors for your choice.
<b>性能 Performance</b>	耐老化性、耐臭氧性、电性能好、耐疲劳 Aging resistance, ozone resistance, good electrical performance, fatigue resistance
<b>用途 Usage</b>	涵闸、桥梁工程橡胶施工、止水，屋顶防漏及冲压胶垫 Sluice, bridge engineering rubber construction, water stop, roof leakage and stamping rubber pad

材质 Quality	硬度 Hardness ShoreA	密度 Density g/cm <sup>3</sup>	强力 Tensile strength Mpa	伸长率 Elongation %
经济氯丁Economical CR	40±5	1.3±0.05	3.5	250
经济氯丁Economical CR	50±5	1.4±0.05	3.5	250
经济氯丁Economical CR	60±5	1.5±0.05	3.5	200
经济氯丁Economical CR	70±5	1.5±0.05	3.5	200
商业氯丁Comercial CR	40±5	1.2±0.05	5.6	300
商业氯丁Comercial CR	50±5	1.3±0.05	5.6	300
商业氯丁Comercial CR	60±5	1.4±0.05	5.6	250
商业氯丁Comercial CR	70±5	1.45±0.05	5.6	250
高级氯丁 High grade CR	40±5	1.4±0.05	10	350
高级氯丁 High grade CR	50±5	1.4±0.05	10	350
高级氯丁 High grade CR	60±5	1.4±0.05	10	350
高级氯丁 High grade CR	70±5	1.4±0.05	10	350

## HYPALON RUBBER SHEET 海帕隆橡胶板

参数 Parameter	比重Density : 1.4g/cm <sup>3</sup> , 拉伸强度Tensile Strength : 7MPa 伸长率Elongation:250% 硬度Hardness: 70 ± 5 shore-A
尺寸 Size	厚度Thickness: 0.8~100mm 宽度Width:30~3000mm 长度可根据客户需求定制 Length can be customized according to customer needs
颜色 Color	黑、红、绿、灰等多种色泽供你选择 Black, red, green, gray and other colors for your choice.
性能 Performance	耐臭氧性, 耐老化性, 耐化学腐蚀性 Ozone resistance, aging resistance, chemical resistance
用途 Usage	可被广泛应用于医疗, 化工, 防腐材料 It can be used for medical and chemical industry, anti-corrosive material



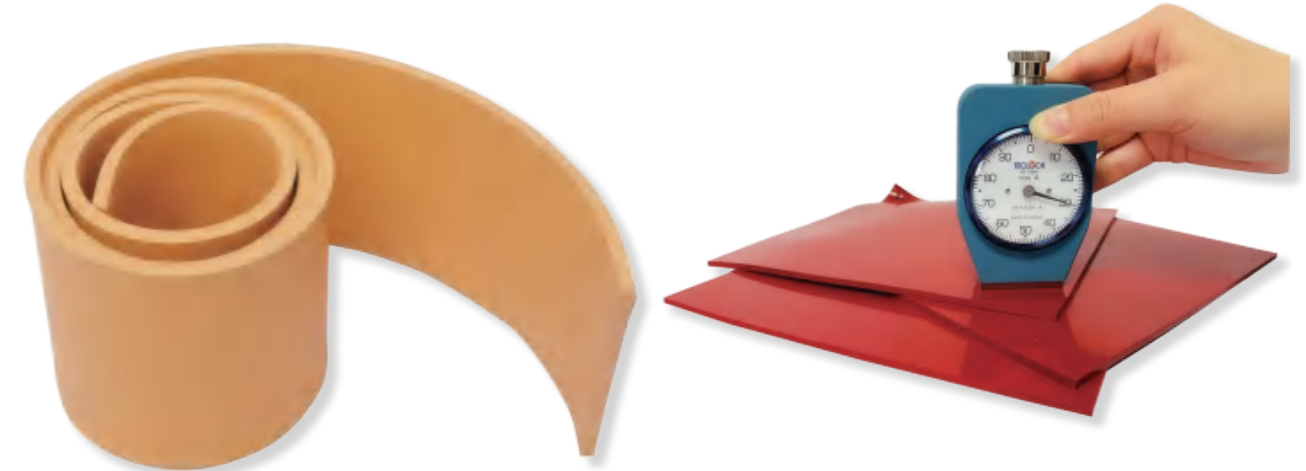
## BUTYL RUBBER SHEET 丁基橡胶板

密度 Density g/cm <sup>3</sup>	硬度 Hardness ShoreA	强力 Tensile strength Mpa	伸长率 Elongation %
1.4 ± 0.05	60 ± 5	6	280
1.4 ± 0.05	70 ± 5	5	230



尺寸 Size	厚度Thickness: 0.8~100mm 宽度Width:30~3000mm 长度可根据客户需求定制 Length can be customized according to customer needs
颜色 Color	黑、红、绿、灰等多种色泽供你选择; Black, red, green, gray and other colors for your choice
性能 Performance	具有中等压力, 在-15~70℃的环境中工作, 有防水、抗震、密封等工作性能 With medium pressure, in -15~70℃ environment work, waterproof, seismic, sealing and other performance
用途 Usage	根据产品技术参数的要求, 可用于各种密封缓冲胶圈、胶垫、密封件及地面铺设、装潢 According to the requirements of the technical parameters of the product, it can be used for all kinds of sealing buffer rubber rings, rubber pads, seals and ground laying and decoration

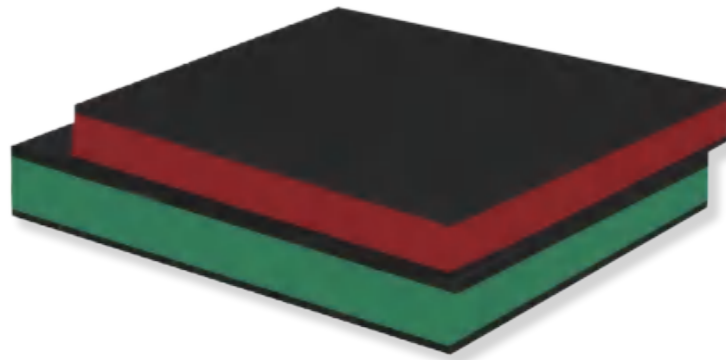
## NATURAL RUBBER SHEET 天然橡胶板



尺寸 Size	厚度Thickness: 0.8~100mm 宽度Width:30~3000mm 长度可根据客户需求定制 Length can be customized according to customer needs
耐温 Temperature	-30℃ - 80℃
性能 Performance	良好的机械和磨损性能; 很好的弹性; 良好的耐臭氧、耐汽油性; 可用的阻燃等级; 耐化学药品; 无机化工产品, 除了具有氧化性酸和卤素耐 Good mechanical and abrasion properties, good elasticity. Good resistance to heat, ozone and weathering. Flame retardant grades available. Resistance to chemicals; resistant to inorganic chemical products, except oxidising acids and halogens.
用途 Usage	作为耐油材料, 广泛应用于电子、热老化网站和汽车密封垫片 widely used in electronics, thermal aging site, as oil-resistant material and automobile gasket

硬度 Hardness ShoreA	磨损 Abration mm <sup>3</sup>	密度 Density g/cm <sup>3</sup>	强力 Tensile Strength Mpa	伸长率 Elongation %	颜色 Color	温度范围 Temperature °C
35 ± 5	80	1.05 ± 0.05	20	650	多种颜色 Multi-Color Available	-25 ~80
40 ± 5	80	1.05 ± 0.05	18	600	多种颜色 Multi-Color Available	-25 ~80
45 ± 5	80	1.1 ± 0.05	18	600	多种颜色 Multi-Color Available	-25 ~120
50 ± 5	120	1.2 ± 0.05	20	500	多种颜色 Multi-Color Available	-25 ~80
60 ± 5	80	1.3 ± 0.05	20	500	多种颜色 Multi-Color Available	-25 ~80

## SANDWICH RUBBER SHEET 三明治胶板



<b>尺寸 Size</b>	卷Rolls: 6mm~20mm(T) X0.6m~2m(W)X1m~20m(L) 片Pieces: 20mm~50mm(T) X0.6M~2M(W) X1m~2m(L)
<b>参数 Parameter</b>	密度Density : 1.2g/cm <sup>3</sup> 拉伸强度Tensile Strength : 15mpa 伸长率Elongation: 400~650% 硬度Hardness: 40,50 ,60shore-A
<b>耐温 Temperature</b>	-30℃ - 80℃
<b>颜色 Color</b>	黑色/绿色/红色/黑色 Black / Green /Red/ Black
<b>性能 Performance</b>	独特的三层组合，优异的抗干磨性和高冲击力 遮光层提供刮擦和清洁效果，中间阻尼层提供额外的柔韧性和抗冲击力 黑色外层保护柔软的绿色中间层，提供持久耐用的舒适感 Unique three layers combination ,excellent resistant to dry abrasion and high impact. Black out layer providing scraping and cleaning effect,middle damping layer provides extra flexible and impact resistance. the black outer layer protects the softer green middle layer to provide a durable and hard wearing solution.
<b>用途 Usage</b>	夹层橡胶主要用于采矿和工业。它可以用作两侧输送带上的皮带清洁装置，以擦去灰尘和湿浆，避免带回并堆积在辊子上 适用于：砂石采石场，骨料和水泥工业铸造厂，机械工程，混凝土厂等 sandwich rubber mainly used in the mining and industry . It can be used as a belt cleaning device on either side conveyor belt to wipe off dust and wet slurry's to avoid carry back and build up on rollers Apply to : sand and gravel quarries ,aggregate and cement industries foundries ,mechanical engineering,concrete plants ,etc

品质 Quality	硬度 Hardness ShoreA	密度 Density g/cm <sup>3</sup>	强力 Tensile Strength Mpa	伸长率 Elongation %	耐温 Temperature °C	磨耗 Abration mm <sup>3</sup>	撕裂强度 Tear resistance N/mm
BGB	70(black)	1.45	14	500	-25~80	150	20
	50(green)	1.3	15	600	-25~80	150	20
BRB	60(black)	1.4	14	500	-25~80	150	20
	40(red)	1.2	15	600	-25~80	150	20

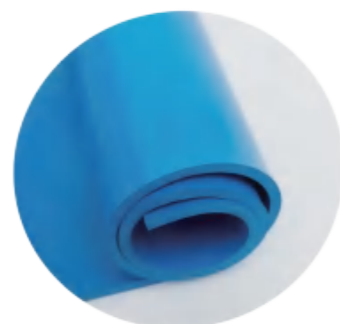
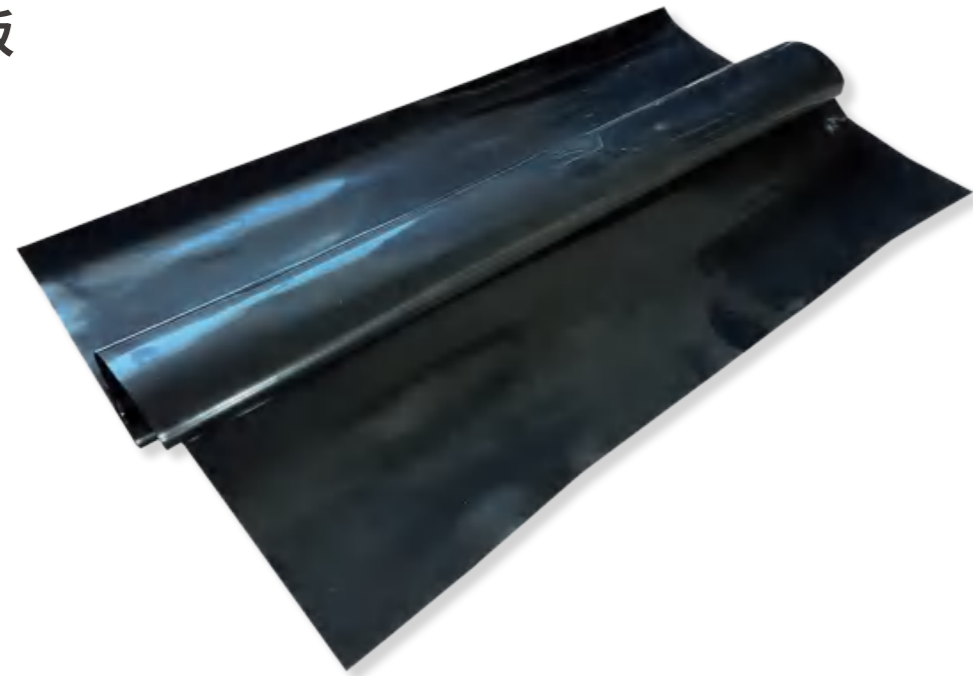
## SILICONE RUBBER SHEET 硅胶板



<b>尺寸 Size</b>	厚度Thickness: 1~100mm 宽度Width:30~2000mm 长度可根据客户需求定制 Length can be customized according to customer needs
<b>颜色 Color</b>	透明，黑色，白色，红色，蓝色等 Transparent,black,,white,red,blue etc
<b>性能 Performance</b>	优异的耐热(干燥空气)，能够在高低温灵活使用;耐紫外线、臭氧,无毒无味;良好的电绝缘性能;耐化学药品; 中度抗一般化工产品 Excellent resistance to heat (dry air), at +200℃ continuous and +220℃ intermittent.Remains flexible at low temperatures of -50℃.Resistant to ultra-violet light, ozone ,poison and odor free Good electrical insulation properties.Resistance to chemicals; moderate resistance to general chemical products
<b>用途 Usage</b>	在低高温的油介质中工作，广泛应用于医疗、制药、食品、汽车、电子、照明行业 Work in the oil medium of low and high temperature ,wide be used in Medical, pharmaceutical, food, automobile, electronics and lighting industry

等级 Grade	硬度 Hardness ShoreA	撕裂 Tear resistance	密度 Density g/cm <sup>3</sup>	强力 Tensile Strength Mpa	伸长率 Elongation %	温度范围 Temperature
commercial	50 ± 5	20N/mm	1.25 ± 0.05	6~7	300	-50 ~200C°
commercial	60 ± 5	20N/mm	1.25 ± 0.05	6~7	300	-50 ~200C°
High tearing	50 ± 5	40N/mm	1.3 ± 0.05	8.5	450	-50 ~200C°
High tearing	60 ± 5	40N/mm	1.3 ± 0.05	8.5	450	-50 ~200C°

## FLUORINE/FKM RUBBER SHEET 氟橡胶板



<b>尺寸 Size</b>	厚度Thickness: 0.8~100mm 宽度Width:30~2000mm 长度可根据客户需求定制 Length can be customized according to customer needs
<b>参数 Parameter</b>	密度Density : 1.95g/cm <sup>3</sup> 拉伸强度Tensile Strength : 8~9MPA 伸长率Elongation: 250% 硬度Hardness: 75 ± 5 shore-A
<b>耐温 Temperature</b>	-50 ~250℃
<b>颜色 Color</b>	黑色, 蓝色, 红色, 绿色等 Black,blue,red,green etc
<b>性能 Performance</b>	经久耐用, 阻燃, 耐油, 耐化学腐蚀性, 耐老化, 能在高温的环境下使用 Durable,Flame-retardant,oil resistant ,anti-chemical corrosion anti-aging and able to withstand high temperature environmental extremes
<b>用途 Usage</b>	冲制各种高耐油, 阻燃, 耐高温, 腐蚀性强的密封件, 密封圈, 缸模衫及航天, 航空领域使用 Apply to punching seals,sealing ring,cylinder lining which are high oil-proof,inflaming retard-ing,high temperature resistance and strong anti-corrosion,they are also used in spaceflight & aviation field

## FDA WHITE NITRILE RUBBER SHEET 白色丁腈胶板



密度 Density g/cm <sup>3</sup>	硬度 Hardness ShoreA	强力 Tensile strength Mpa	伸长率 Elongation %	颜色 Color
1.6±0.05	60±5	4.5	300	白White

<b>尺寸 Size</b>	厚度Thickness: 0.8~100mm 宽度Width:30~2000mm 长度可根据客户需求定制 Length can be customized according to customer needs
<b>参数 Parameter</b>	Density密度 : 1.5g/cm <sup>3</sup> Tensile Strength 拉伸强度: 4.5MPA Elongation伸长率: 300% Hardness硬度: 60 ± 5 shore-A
<b>性能 Performance</b>	经久耐用, 阻燃, 耐油, 耐化学腐蚀性, 耐老化, 能在高温的环境下使用 Durable,Flame-retardant,oil resistant ,anti-chemical corrosion anti-aging and able to withstand high temperature environmental extremes
<b>用途 Usage</b>	冲制各种高耐油, 阻燃, 耐高温, 腐蚀性强的密封件, 密封圈, 缸模衫及航天, 航空领域使用 Apply to punching seals,sealing ring,cylinder lining which are high oil-proof,inflaming retard-ing,high temperature resistance and strong anti-corrosion,they are also used in spaceflight & aviation fields

## ACID AND ALKALI RESISTANT RUBBER SHEET 耐酸碱胶板

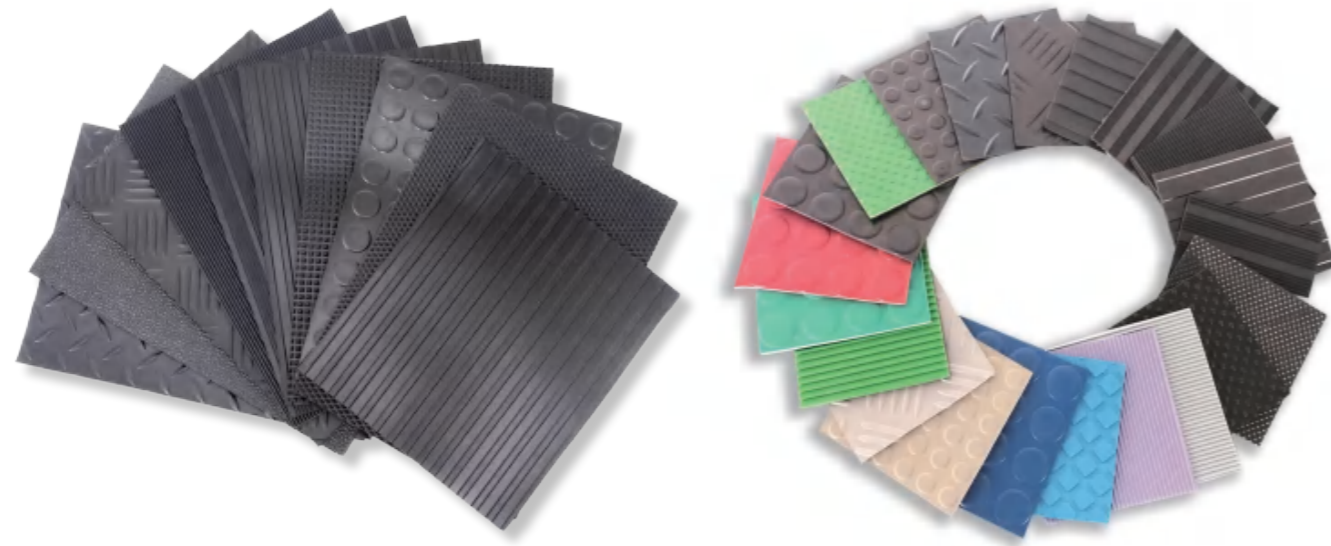


密度 Density g/cm <sup>3</sup>	硬度 Hardness ShoreA	强力 Tensile strength Mpa	伸长率 Elongation %	颜色 Color
1.6±0.05	70±5	7-8	250	黑Black
1.2±0.05	40±5	17-18	700	黑Black
1.5±0.05	70±5	4.5-5	220	黑Black
1.4±0.05	55±5	8.5-9.5	400	白White

<b>尺寸 Size</b>	厚度Thickness: 0.8~100mm 宽度Width:30~3000mm 长度可根据客户需求定制 Length can be customized according to customer needs
<b>颜色 Color</b>	Black,White etc 黑色, 白色等
<b>性能 Performance</b>	分本色(白色)和黑色耐酸碱胶板两种, 均用于酸、碱浓度较低、腐蚀性较强的介质中 Divided into two types: natural color (white) and black acid and alkali resistant rubber sheet, both used in media with low acid and alkali concentrations and strong corrosiveness
<b>用途 Usage</b>	可冲制用于酸、碱环境及腐蚀性环境的密封件、垫片和试验台铺设 It can be used for laying seals, gaskets, and test benches in acid, alkali, and corrosive environments

# 03 ANTI-SLIP RUBBER MAT

## 防滑橡胶垫系列



参数 Parameter	密度Density : 1.5g/cm <sup>3</sup> 拉伸强度Tensile Strength : 3-4MPa 伸长率Elongation: 200% 硬度Hardness: 70 ± 5 shore-A
	密度Density : 1.6g/cm <sup>3</sup> 拉伸强度Tensile Strength : 2-3MPa 伸长率Elongation: 200% 硬度Hardness: 70 ± 5 shore-A
	密度Density : 1.8g/cm <sup>3</sup> 拉伸强度Tensile Strength : 2MPa 伸长率Elongation: 200% 硬度Hardness: 70 ± 5 shore-A
耐温 Temperature	-30~80℃
颜色 Color	黑色/彩色 Black/Color
性能 Performance	防滑, 良好的机械和磨损性能, 减震 Anti-slip ,good mechanical and abrasion properties,anti-shock
用途 Usage	运动场、走廊上、高交通流量的地区、地面 零售柜台、畜牧业场所、工业电池和汽车;航运和包装工作场所;重型的工作场所 Sports areas,Hallways,High traffic areas,Ground Behind retail counters,Kennels,industrial cells and automotive Shipping and packaging working cells,Heavy-duty work places

### FINE RIBBED RUBBER MAT

#### 细条纹

尺寸Size

厚度Thickness	宽度 Width	长度 Length
3~10mm	0.5~2m	根据客户要求 according to the customers

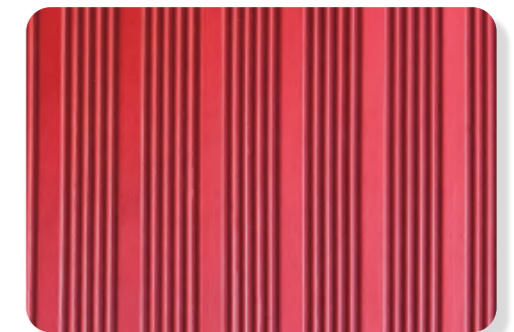


### COMPOSITE RUBBER MAT

#### 中细条纹

尺寸Size

厚度Thickness	宽度 Width	长度 Length
3~8mm	0.5~1.35m	根据客户要求 according to the customers

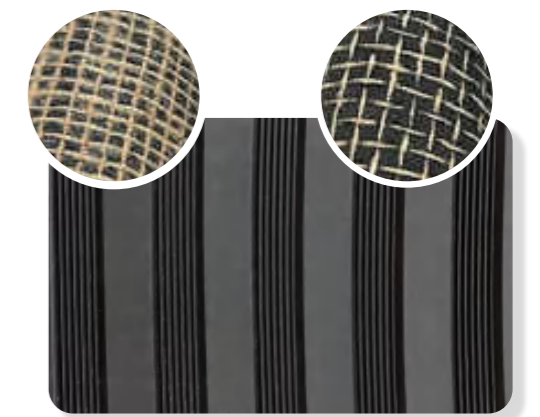


### WIDE AND THIN STRIPED RUBBER MAT

#### 麻布宽细沟条纹

尺寸Size

厚度Thickness	宽度 Width	长度 Length
3~5mm	0.5~1.35m	根据客户要求 according to the customers



### COMPOSITE FLAT RIBBED RUBBER MAT 复合中条纹

尺寸Size

厚度Thickness	宽度 Width	长度 Length
3~8mm	0.5~1.2m	根据客户要求 according to the customers



### WIDE RIBBED RUBBER MAT 宽条纹

尺寸Size

厚度Thickness	宽度 Width	长度 Length
3~8mm	0.5~1.5m	根据客户要求 according to the customers



### WIDE RIBBED RUBBER MAT 特宽条纹

尺寸Size

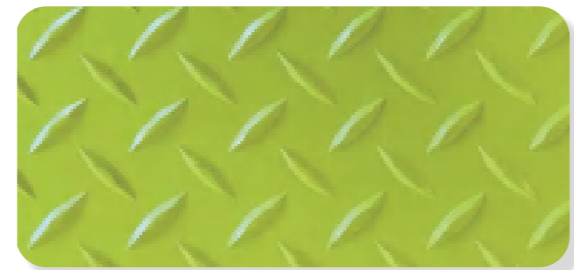
厚度Thickness	宽度 Width	长度 Length
3~8mm	0.5~1.5m	根据客户要求 according to the customers



### WILLOW PATTERN PLATE RUBBER SHEET 柳叶纹

尺寸Size

厚度Thickness	宽度 Width	长度 Length
3~8mm	0.5~1.5m	根据客户要求 according to the customers



### CHECKER PATTERN RUBBER MAT 五杠板

尺寸Size

厚度Thickness	宽度 Width	长度 Length
3~8mm	0.5~1.5m	根据客户要求 according to the customers



### COIN DOT ROUND RUBBER MAT 大圆点

尺寸Size

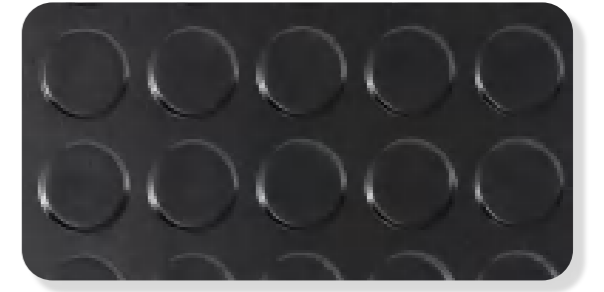
厚度Thickness	宽度 Width	长度 Length
3~8mm	0.5~1.5m	根据客户要求 according to the customers



### HIGH DOT 高圆点

尺寸Size

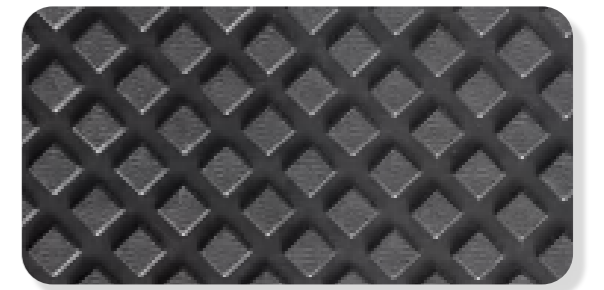
厚度Thickness	宽度 Width	长度 Length
3~8mm	0.5~1.5m	根据客户要求 according to the customers



### SQUARE PATTERN RUBBER MAT 小方格

尺寸Size

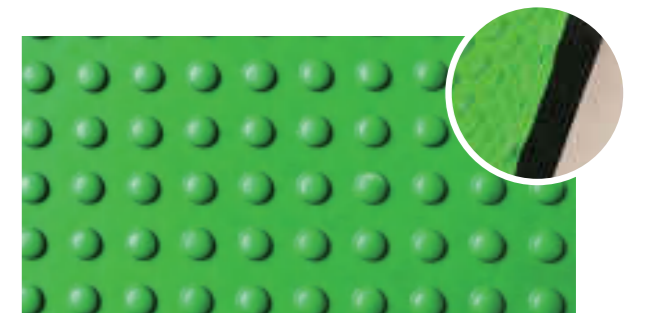
厚度Thickness	宽度 Width	长度 Length
3~8mm	0.5~1.2m	根据客户要求 according to the customers



### SMALL STUD RUBBER MAT 小圆点

尺寸Size

厚度Thickness	宽度 Width	长度 Length
3~8mm	0.5~1.2m	根据客户要求 according to the customers



### CENTRE STUD RUBBER MAT 中圆点

尺寸Size

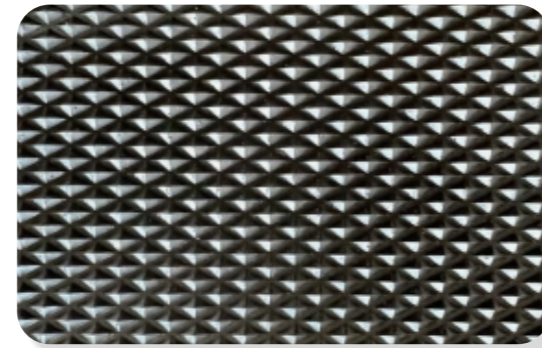
厚度Thickness	宽度 Width	长度 Length
3~8mm	0.5~1.5m	根据客户要求 according to the customers



## RICE GRAINS RUBBER FLOOR MAT 米粒纹

尺寸Size

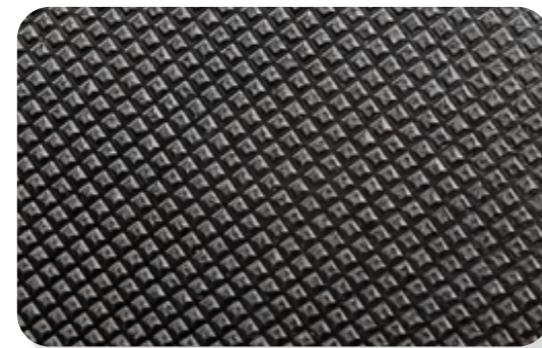
厚度Thickness	宽度 Width	长度 Length
3~6mm	0.5~1.2m	根据客户要求 according to the customers



## SMALL DIAMOND RUBBER MAT 小金字塔

尺寸Size

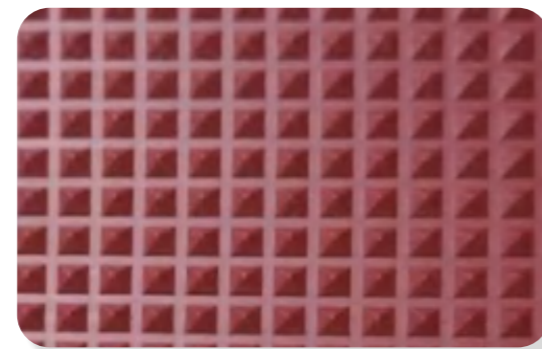
厚度Thickness	宽度 Width	长度 Length
3~8mm	0.5~1.5m	根据客户要求 according to the customers



## DIAMOND RUBBER MAT 大金字塔

尺寸Size

厚度Thickness	宽度 Width	长度 Length
3~6mm	0.5~1.2m	根据客户要求 according to the customers



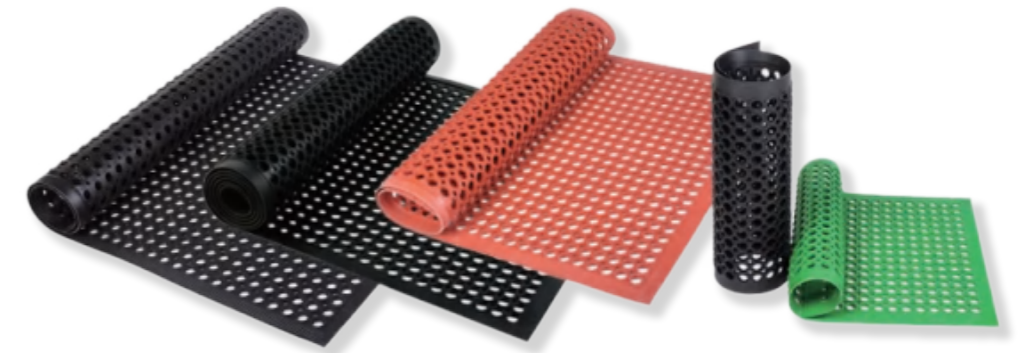
## ORANGE PEEL RUBBER MAT 橘皮纹

尺寸Size

厚度Thickness	宽度 Width	长度 Length
3~8mm	0.5~1.5m	根据客户要求 according to the customers



## ANTI-SLIP HOLLOW MAT 多孔垫



参数 Parameter

密度Density : 1.55g/cm<sup>3</sup> 拉伸强度Tensile Strength : 500PSI 伸长率Elongation: 200%  
硬度Hardness: 70 ± 5 shore-A

颜色 Color

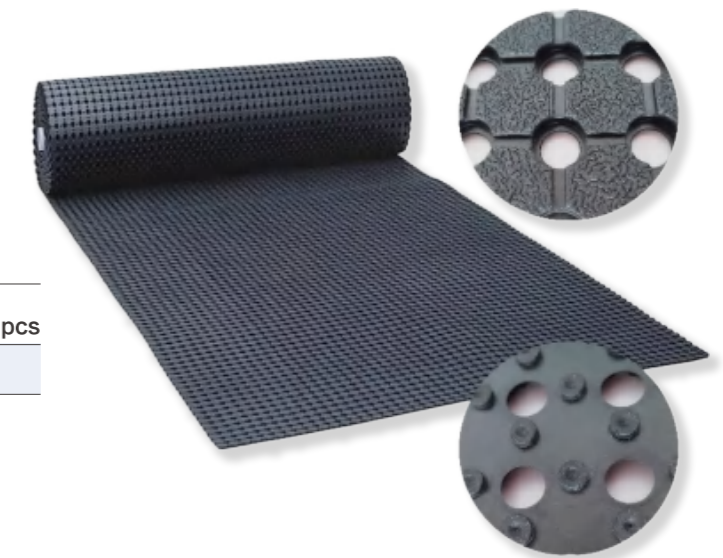
黑色、红色、绿色、灰色、蓝色等 Black, red, green, gray, blue, etc.

性能 Performance

防滑, 良好的机械和磨损性能, 耐油, 减震  
Anti-slip ,good mechanical and abrasion properties,oil resistant,anti-shock

	厚度 Thickness ShoreA	宽度 Wide mm	长度 Length mm	重量 Weight of pcs
No.1	16	914.4	914.4	9kg
No.2	11	914.4	1524	13kg

## DRAINAGE ANTI FATIGUE RUBBER MAT 排水抗疲劳垫



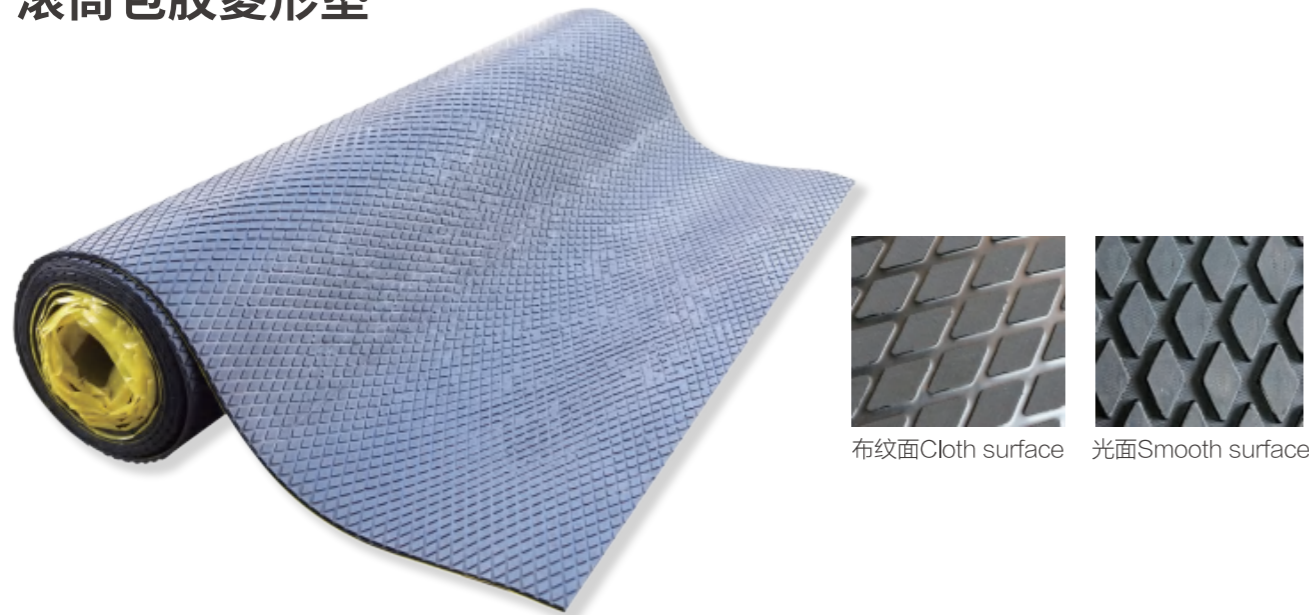
厚度 Thickness ShoreA	宽度 Width mm	长度 Length mm	重量 Weight of pcs
10	1830	10000	150kg

用途 Usage

- 1.用于卡车托盘, 小型/大型货车和货车, 工业区和机械车间
- 2.由重型橡胶制成, 抗疲劳, 易于清洁
- 3.点胶背衬还提供防滑表面并防止垫子移动
- 4.打开排水孔, 将带状液体喷出
- 1.Ideal for use in truck trays,small/large utes and vans,and industrial areas and machine shops
- 2.made from heavy duty rubber,which makes anti fatigue and easy to clean
- 3.the stippled backing also provides a non-slip surface and prevents the mat from moving
- 4.open drainage holes strap spillit liquids

## PULLEY LAGGING RUBBER MAT

### 滚筒包胶菱形垫



布纹面Cloth surface 光面Smooth surface

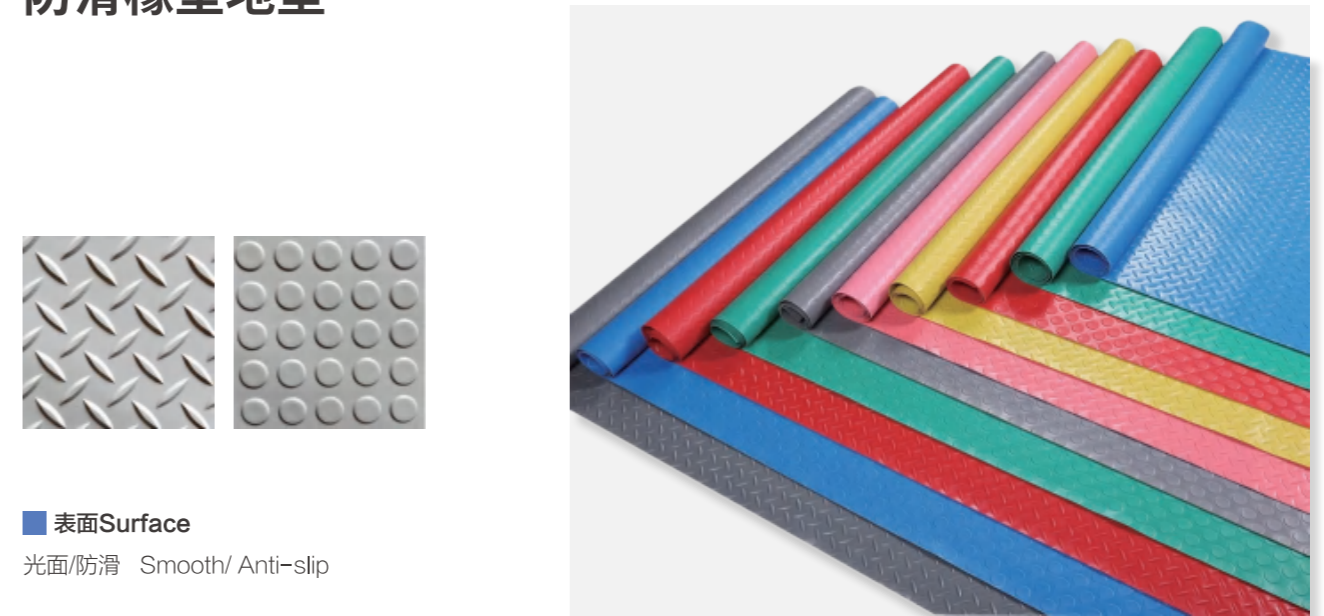
滚筒包胶是皮带输送运输系统中重要部件和组成部分，包胶后的滚筒能有效改善输送系统的运行状况，保护金属滚筒不被磨损，菱形花纹的包胶表面，能增大橡胶板表面摩擦力，能有效的防止滚筒与皮带之间的滑动摩擦，减少皮带打滑，减少滚筒表面的物料粘结，从而减小皮带的跑偏和磨损，提高运行效率，使滚筒与皮带同步运转，从而保证皮带高效的、大运量的运转。

Pulley Lagging is an important component in the belt conveyor transportation system. After wrapping, the drum can effectively improve the operating condition of the conveyor system, protect the metal drum from wear, diamond or herringbone patterns, and the surface of ceramic rubber plate wrapping can increase the surface friction of the rubber plate, effectively prevent sliding friction between the drum and the belt, reduce belt slipping, and reduce material adhesion on the surface of the drum. This reduces the deviation and wear of the belt, improves operating efficiency, and synchronizes the operation of the drum and belt, thereby ensuring efficient and high-capacity operation of the belt.

<b>尺寸 Size</b>	厚度Thickness 10-20mm*宽度Width 1-2m*长度 Length 10m
<b>参数Parameter</b>	面层-黑色菱形纹面 密度Density : 1.3g/cm <sup>3</sup> 拉伸强度Tensile Strength : 6MPa 伸长率Elongation: 250% 硬度Hardness: 60 ± 5 shore-A 底层-氯丁未硫化层 密度Density : 1.25g/cm <sup>3</sup> 拉伸强度Tensile Strength : 12MPa 伸长率Elongation: 350% 硬度Hardness: 60 ± 5 shore-A
<b>耐温Temperature</b>	可以在-20° C ~ +80° C的范围内长期使用，橡胶层不会因温度变化而与铁皮滚筒脱开 It can be used for a long time within the range of -20 ° C to +80 ° C, and the rubber layer will not detach from the iron drum due to temperature changes
<b>用途 Usage</b>	广泛用于：电厂、煤矿、水泥厂、钢铁、冶金、煤炭、化肥、粮库、港口等行业 Widely used in industries such as power plants, coal mines, cement plants, steel, metallurgy, coal, fertilizers, grain depots, ports, etc.

## ANTI-SLIP RUBBER&PLASTIC MAT

### 防滑橡塑地垫



#### ■ 表面Surface

光面/防滑 Smooth/ Anti-slip

#### ■ 颜色Color

黑色/绿色/灰色/蓝色/红色等 black/green/grey/blue/red.etc.

#### ■ 尺寸 Size

ITEM	厚度 Thickness mm	宽度 Wide m	长度 Length m
圆扣	3.5-12	≤2	根据客户要求 according to the customers
柳叶	4.0-12	≤2	根据客户要求 according to the customers

#### ■ 性能 Performance

防静电，绝缘，耐老化性，耐臭氧性，耐疲劳，防水，耐磨，抗划痕，抗撕裂，耐腐蚀、耐酸碱、无味。

antistatic, insulation, aging resistance, ozone resistance, fatigue resistance, waterproof, abrasion resistance, scratch resistance, tear resistance, corrosion resistance, acid and alkali resistance, odorless.

#### ■ 用途 Usage

用于走廊的铺装和装饰；运动区；走廊；高流量区域；地在重赛柜台后面；犬舍；工业电池和汽车；装运和包装工作间；重型工作场所；会议室；空气端口；健身房和其他区域。

It is used for the pavement and decoration of hallways; sport areas; hallways; high traffic areas; ground; behind retail counters; kennels; Industrial cells and automotive; shipping and packing working cells; heavy-duty work places; meeting room; air port; gym and other areas.

#### ■ 包装Package

编织袋、托盘或根据客户要求定制。

film, woven bags, Or according to customer requirements.

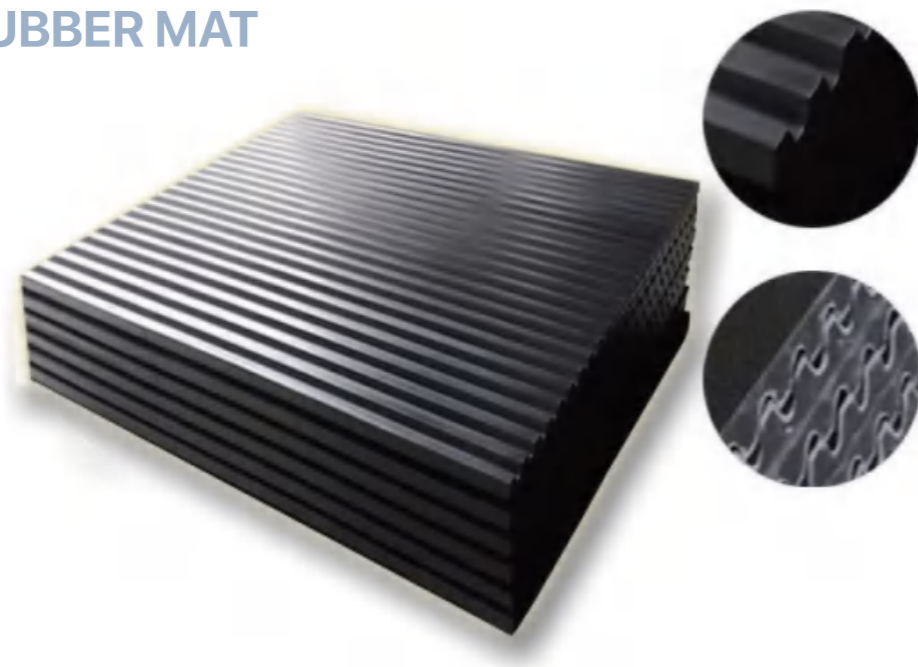
## 04 COW RUBBER MAT

### 牛马垫系列



### TURTLE COW RUBBER MAT

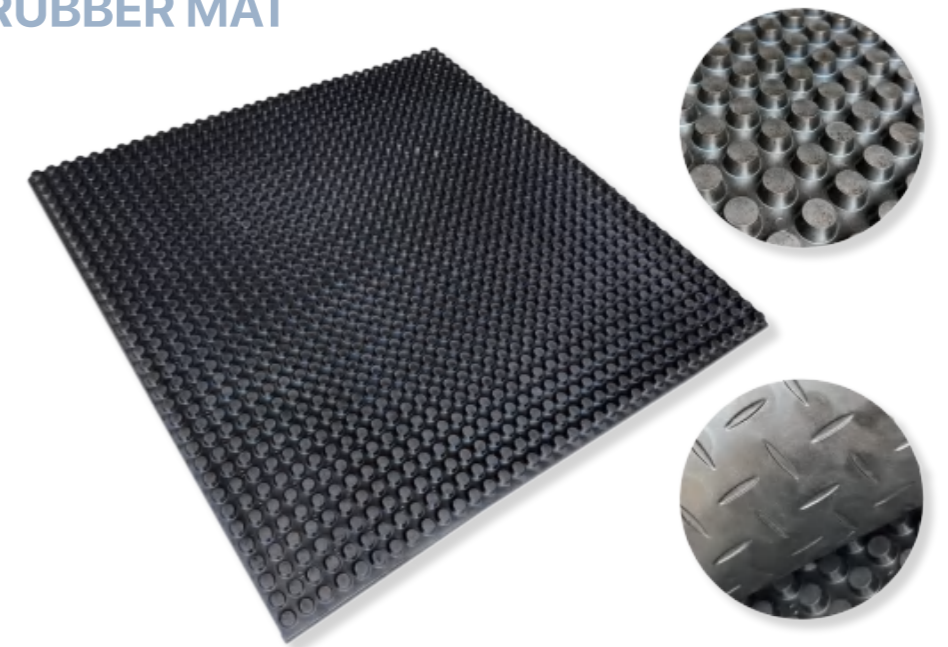
#### 牛栏垫



参数Parameter	密度Density : 1.3g/cm <sup>3</sup> , 硬度Hardness: 65 ± 5 shore-A
尺寸 Size	厚度Thickness 33mm*宽度Width 1220*长度 Length 1830mm
颜色 Color	黑色Black
温度范围 Temperature range	-30~80 °C
性能 Performance	防滑, 防震, 易于清洁/独特的抗菌表面 提高生产率和获利能力/减少工作量/减轻疲劳感和压力 Anti-slip ,shock-proof Easy to clean / Unique anti-bacterial surface. Increased productivity & Profitability / Reduced workload /Reduce lameness and stress.
用途 Usage	广泛用于畜牧业场所 Widely used in animal husbandry places

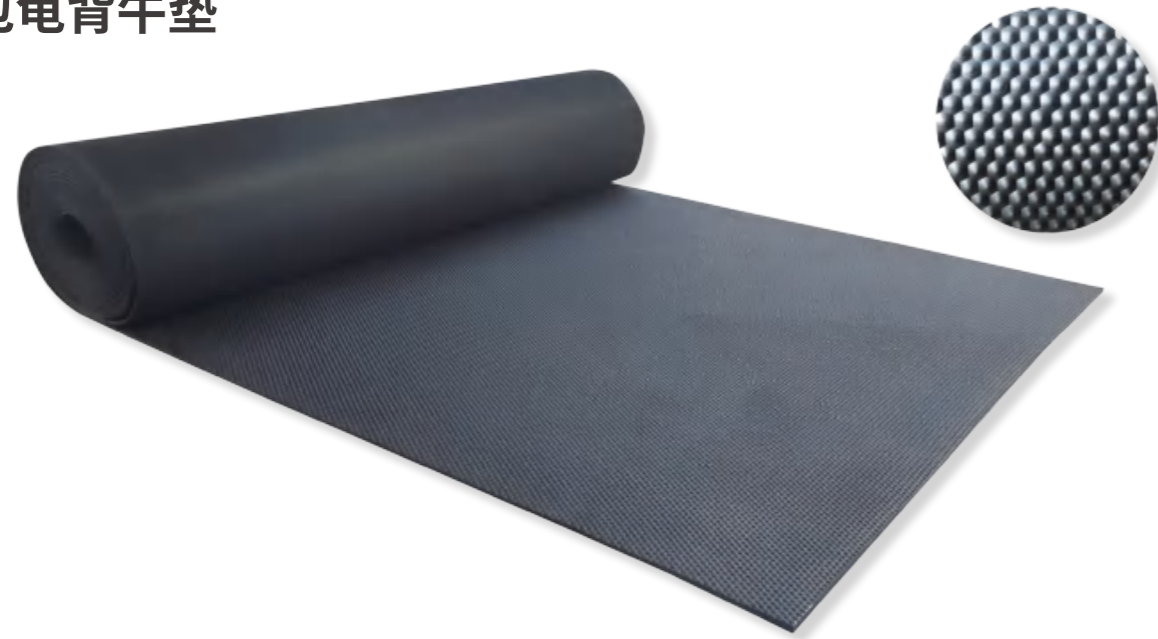
### ANTI-FATIGUE RUBBER MAT

#### 栓钉板



参数Parameter	密度Density : 1.55g/cm <sup>3</sup> , 硬度Hardness: 75 ± 5 shore-A
尺寸 Size	厚度Thickness 19mm*宽度Width 1m*长度 Length 1m 铆钉高度: 12mm
颜色 Color	黑色Black
温度范围 Temperature range	-30~80 °C
性能 Performance	防滑, 防震, 易于清洁/独特的抗菌表面 便于污水排放, 减少工作量 Anti slip, shockproof, easy to clean/unique antibacterial surface Facilitate sewage discharge and reduce workload
用途 Usage	广泛用于农业, 畜牧业场所 Widely used in agricultural and animal husbandry places

## PEBBLE COW MAT 圆包龟背牛垫

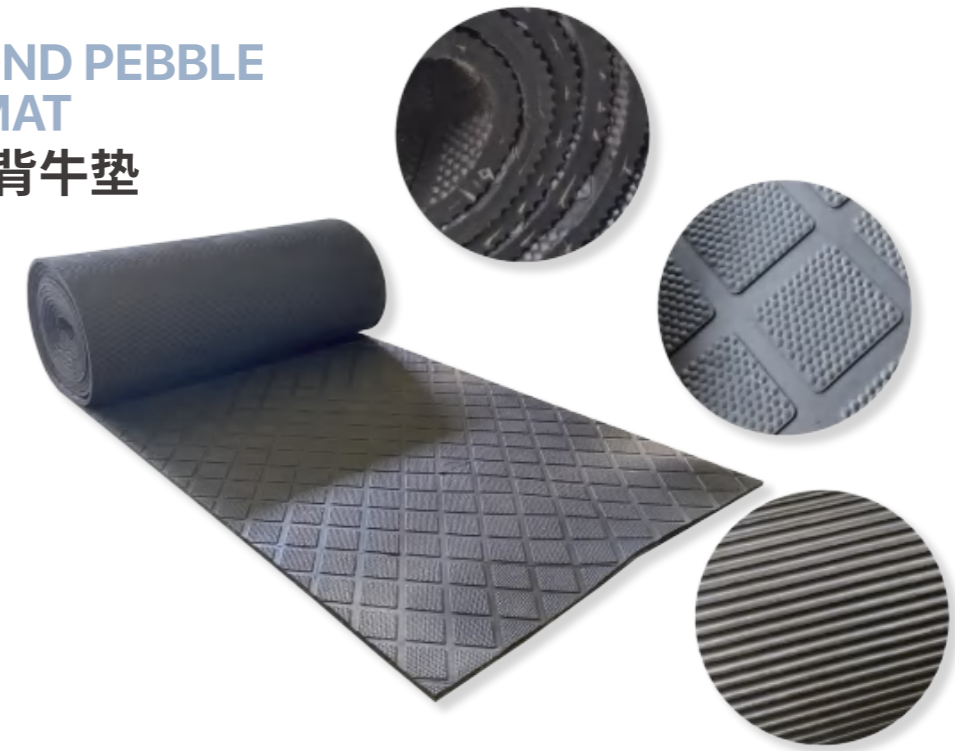


参数Parameter	比重Density : 1.3g/cm <sup>3</sup> 拉伸强度Tensile Strength : 5MPa 伸长率Elongation:200% 硬度Hardness: 60 ± 5 shore-A
尺寸 Size	厚度Thickness:10~20mm 宽度Width:1~2m 长度根据客户需求 according to the customers' requirments
颜色 Color	黑色Black
撕裂强度 Tear resistance	20N/mm
温度范围 Temperature range	-30~80 °C
性能 Performance	表面防护 / 坚固耐用; 防滑减震 / 易于清洁; 放松动物肌肉 / 改善动物血液循环 提高产奶量 / 延长动物寿命 Surface protection /Strong and durable. Non-slip damping /Easy to clean Relaxation of Animal Muscles/ Improve blood circulation in animals Higher milk production /Prolongs animal lifetime

用途 Usage 广泛用于畜牧业场所  
Widely used in animal husbandry places



## DIAMOND PEBBLE COW MAT 菱形龟背牛垫



参数Parameter	比重Density : 1.3g/cm <sup>3</sup> 拉伸强度Tensile Strength : 5MPa 伸长率Elongation:200% 硬度Hardness: 60 ± 5 shore-A
尺寸 Size	厚度Thickness: 10~20mm 宽度Width: 1~2m 长度根据客户需求 according to the customers' requirments
颜色 Color	黑色Black
撕裂强度 Tear resistance	20N/mm
温度范围 Temperature range	-30~80 °C
性能 Performance	表面防护、坚固耐用; 防滑减震、易于清洁; 放松动物肌肉、改善动物血液循环 提高产奶量、延长动物寿命 Surface protection /Strong and durable. Non-slip damping /Easy to clean Relaxation of Animal Muscles/ Improve blood circulation in animals Higher milk production /Prolongs animal lifetime

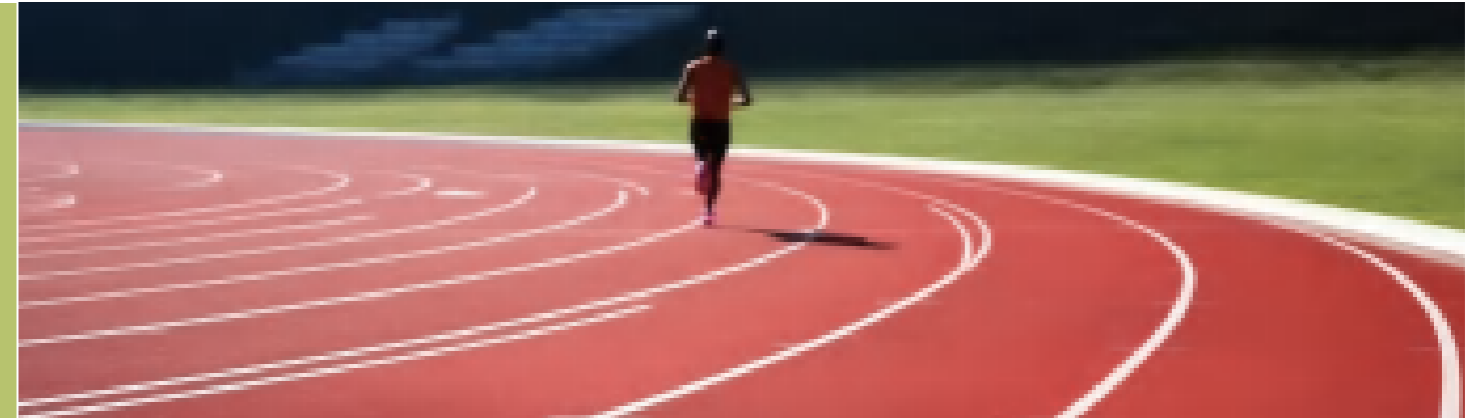
用途 Usage 广泛用于畜牧业场所  
Widely used in animal husbandry places



05

## RUBBER RUNNING & FITNESS FLOORING SERIES

### 橡胶跑道&室内运动地板系列



## RUBBER RUNNING TRACK

### 橡胶跑道产品

#### 上层：彩色复合三元乙丙橡胶材料生产。

长久抵御紫外光及多变气候、气象条件影响表面凹凸图案面层设计提供优良的防滑、抗尖钉、抗磨损、抗反光作用具有非凡的抗老化、抗紫外光能力，颜色持久，无反射光，无眩目感。

#### Upper layer:

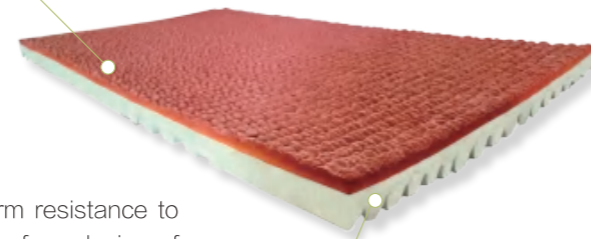
Production of colored composite EPDM rubber material. Long term resistance to ultraviolet light, changeable climate and weather conditions. The surface design of concave convex pattern provides excellent anti slip, anti nail, wear resistance and anti reflection functions. It has extraordinary anti-aging and anti ultraviolet light capabilities. It has durable color, no reflected light and no glare.

#### 下层：灰色发泡材质华夫饼图案设计。

提供良好的反弹力，增加运动表现，提供缓冲，减轻冲击力，减少运动伤害。

#### Lower layer:

Grey foam material with a waffle pattern design. Provide good rebound force, increase athletic performance, provide cushioning, reduce impact, and reduce sports injuries.



预制环保橡胶跑道材料由三元乙丙橡胶和天然橡胶制成，经过压延、硫化和稳定处理的特殊工艺制造而成。

考虑运动员对生物力学的要求：三维网状的内部结构在弹性、强度、韧性和减震方面都具有良好的效果，为运动员提供了良好的保护，有效地减少了肌肉疲劳和轻微损伤。

该产品由上下两层（垫层）组成，顶层由优质复合橡胶（EPDM）制成，能够抵御紫外线和气候变化，并具有优异的防滑、耐磨和反光性能；底层（垫层）由灰色泡沫弹性橡胶材料和华夫格花纹设计而成，缓冲层是专门设计的，为运动员的关节提供卓越的弹跳弹性和缓冲；泡沫华夫格花纹设计减轻对运动者的冲击，减轻运动损伤。

Prefabricated environmental rubber track materials is made up from compound rubber (EPDM) and natural rubber and manufactured through special process in calendaring, vulcanizing and stabilizing treatment.

We fully consider the athletes' requirements for biomechanics: the three-dimensional and reticular interior structure offer us the excellent effects in elasticity, intensity, toughness and shock absorption, which offer excellent protection and effectively decreases muscular fatigue and slight hurt for athletes; The products are composed of top and bottom layers (cushion layer), the top layer is made from premium compound rubber (EPDM), it is able to resist ultraviolet light and variation of climates and offer excellent performance to prevent skidding, spikes, abrasion and reflection. bottom layer (cushion layer) is composed from grey foamed elastic rubber material and waffle pattern designed, cushion layer is specially designed to provide excellent bounce resiliency and cushion on athlete joints; foamed waffle pattern design relieve impact to sporter to alleviate sport injury.

品种 Quality	硬度 Hardness ShoreA	比重 Specific gravity	强力 Tensile Strength Mpa	伸长率 Elongation %	颜色 Color	规格 Dimension
跑道 Rubber Track	55 ± 5 ShoreA	1.3 ± 0.05 (g/cm <sup>3</sup> )	13MPa	200(%)	红色、绿色、蓝色 Red、Green、Blue	9mm-13mmX 1220mmX20m

标准 STANDARD	单位 UNIT	数值 VALUE
总挥发性有机化合物 TVOC	mg/(m <sup>2</sup> · h)	≤5
冲击吸收 Shock Absorption @0℃	%	35-50
冲击吸收 Shock Absorption @23℃	%	35-50
冲击吸收 Shock Absorption @50℃	%	35-50
垂直变形 Vertical Deformation	mm	0.6-3.0
抗滑值 BPN Skid Resistance @20℃	--	≥47
燃斑直径 Burning Diameter	mm	≤50

#### 产品特性 Feature and benefit

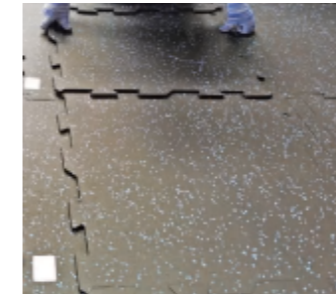
- 不含橡胶颗粒，无脱粒产生，非常适合频繁使用
- 减震效果好，反弹性能优；粘着力好，抗尖钉能力强
- 防滑、耐磨性能好，即使是雨天性能也不受影响
- 具有非凡的抗老化、抗紫外光能力，颜色持久，无反射光，无眩目感
- 预制成型，安装方便
- 全天候使用，使用寿命长；维护简便，维修成本低
- 阻燃、绝缘、隔音性能好，防火、安全性能高
- 无毒、无害，符合环保要求
- Outstanding performance of sports safety
- Allowing frequent use, free of rubber granules
- Superior in damping effect and bounce performance
- Good resistance to skidding and abrasion, even free of influence under the rainy day
- Excellent in weather resistance and UV resistance, keep a stable color persistently
- Easy installation and maintenance

## RUBBER RUNNING TRACK 皮革纹产品



品种 Quality	硬度 Hardness ShoreA	比重 Specific gravity	强力 Tensile Strength Mpa	伸长率 Elongation %	颜色 Color	规格 Dimension
皮革纹胶板 Leather Finish Matting	Top: 60±5 ShoreA	1.45±0.05 (g/cm³)	8MPa	350(%)	彩色面 More Colors Available On Surface	4.5mm、6mm、 8mmX1200mm X20m
	Bottom: 60±5 ShoreA	1.45±0.05 (g/cm³)	4MPa	350(%)	黑色底 Black-Bottom	
皮革纹胶板 Leather Finish Matting	75±5 ShoreA	1.45±0.05 (g/cm³)	3.5MPa	200(%)	黑色/Black	4.5mm、6mm、 8mmX1200mm X20m

## FITNESS FLOORING-RUBBER CRUMB MAT 室内运动地板-运动胶粉板



室内运动胶粉板用优质胶粉制成，为您的健身需求提供卓越的价值和多种选择。无孔的表面处理消除气味和卫生问题。健身胶粉板的设计耐汗水和其他液体，以减少清洁和维护。

这种设计让地板更干净、持久耐用，能够大量适用于所有类型的竞技场和健身场所。运动胶粉板表面可以撒上EPDM颗粒让你的健身房看起来更加美观。

Fitness rubber crumb mat is made from Premium rubber powder providing superior value and multiple options for all your fitness requirements. Non-porous surface eliminate odors and hygiene concerns. Fitness rubber crumb mat is engineered to help repel sweat and other liquids to minimize clean-up and maintenance.

This allows for a cleaner, longer lasting floor that is designed to withstand heavy use for all types of arenas and fitness space. Various color options of EPDM speckles on the mat surface to make your gym stand out from the crowd.

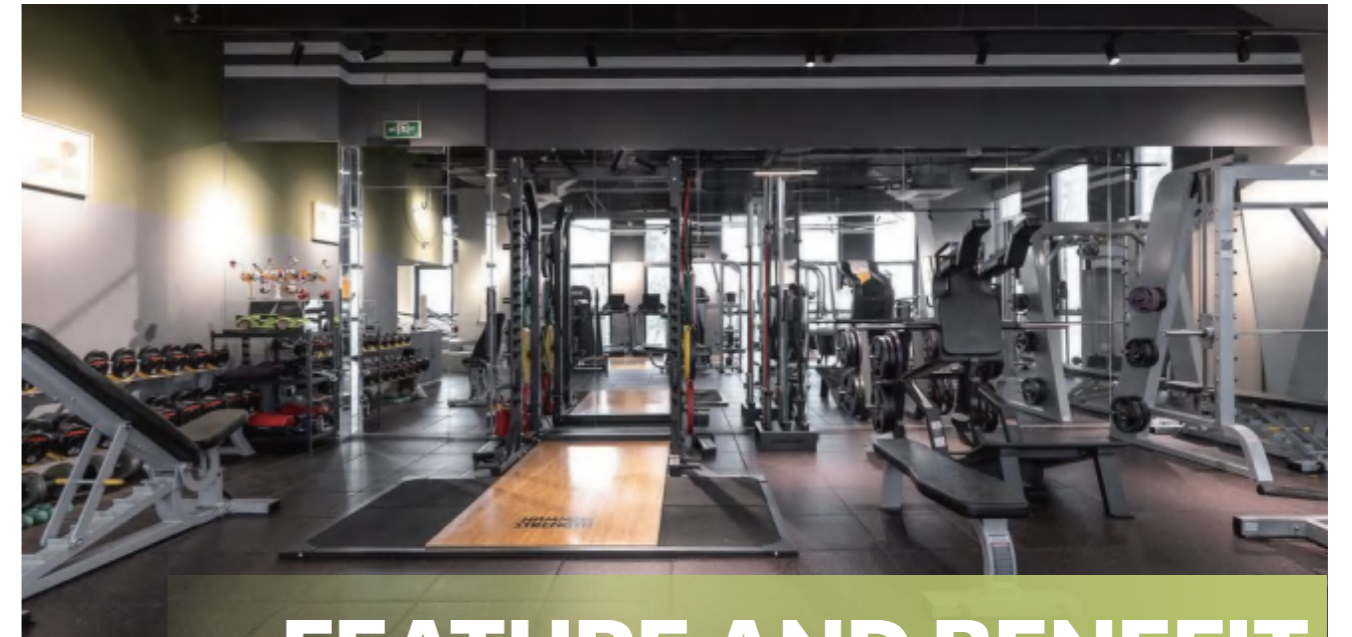
品种 Quality	硬度 Hardness ShoreA	比重 Specific gravity	强力 Tensile Strength Mpa	伸长率 Elongation %	颜色 Color	规格 Dimension
运动胶粉板 Fitness Crumb Mat	75±5 ShoreA	1.25±0.05 (g/cm³)	>390 Psi	>80(%)	黑色/Black (Added EPDM (sulfur cured) speckle if requested)	10mm、12mm、 17mmX1220mmX 1830mm

### 产品特性 Feature and benefit

- 持久耐用结实防滑
- 保护地面
- 抗高冲击力
- 提供良好的抓地力和摩擦力
- Excellent in durability and Slip resistant
- Protects floors from impact
- High impact resistant
- Excellent grip and traction

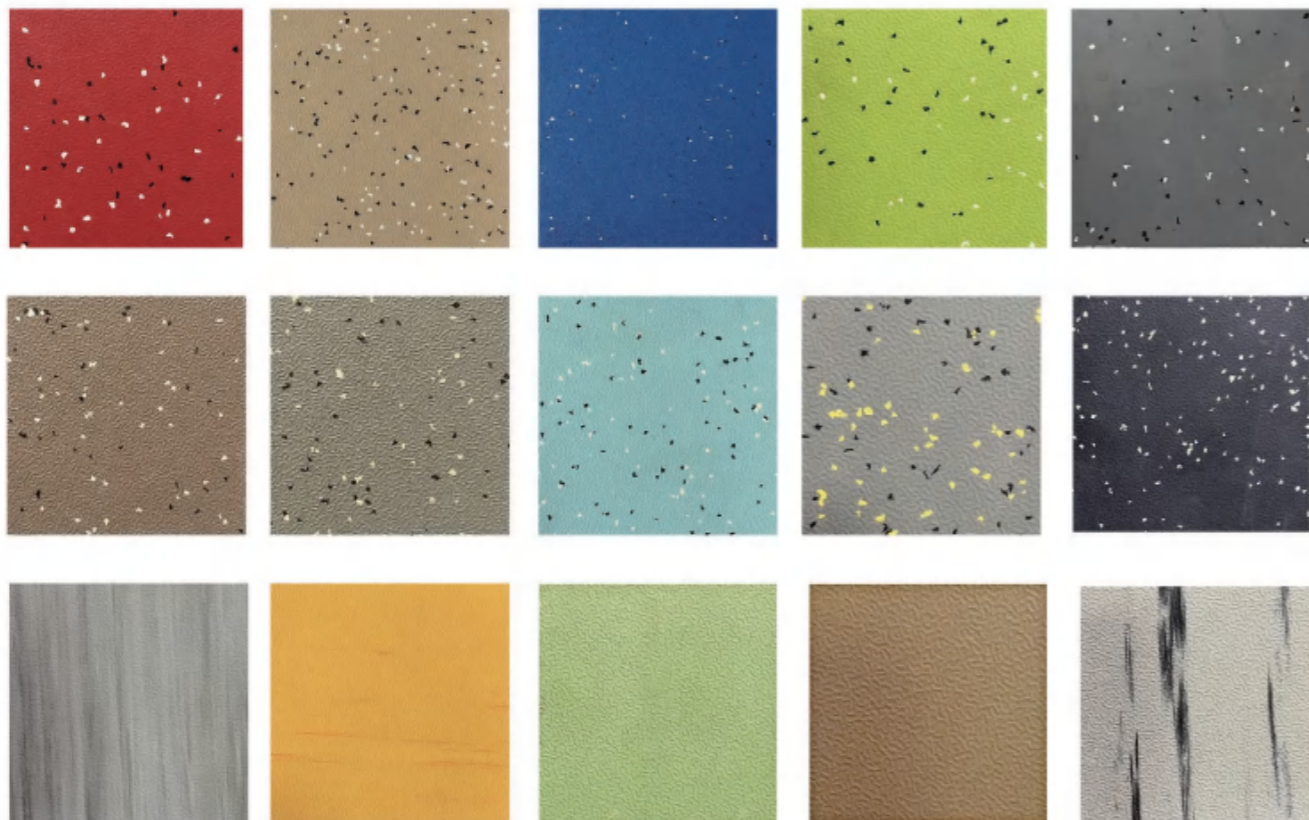
## FITNESS FLOORING 室内运动地板

品种 Quality	硬度 Hardness ShoreA	比重 Specific gravity	强力 Tensile Strength Mpa	伸长率 Elongation %	颜色 Color	规格 Dimension
健身房地板——硫化三元乙丙橡胶 1.表面颜色纯正 2.表面斑点 3.表面大理石花纹漩涡图案 <b>Fitness Flooring—sulfur cured EPDM</b> 1.Pure color on surface 2.Speckles on the surface 3.Marbleized swirl pattern on the surface	Top: 80±5 ShoreA	1.4±0.05 (g/cm³)	8MPa	350(%)	彩色面 More Colors Available On Surface	6mm/8mm/10mm X1000mmX1000mm Can be made in rolls, mats and tiles
	Bottom: 70±5 ShoreA	1.5±0.05 (g/cm³)	2.5MPa	350(%)	灰色底 Grey- Bottom	



## FEATURE AND BENEFIT

### 表面图案分类 Surface pattern classification



随着健身在当今社会越来越流行，健身橡胶运动地板已经成为最受欢迎的地面产品之一。在过去的二十年里，去健身房健身已经成为全世界近百万健身爱好者不可分割的一部分日常生活。

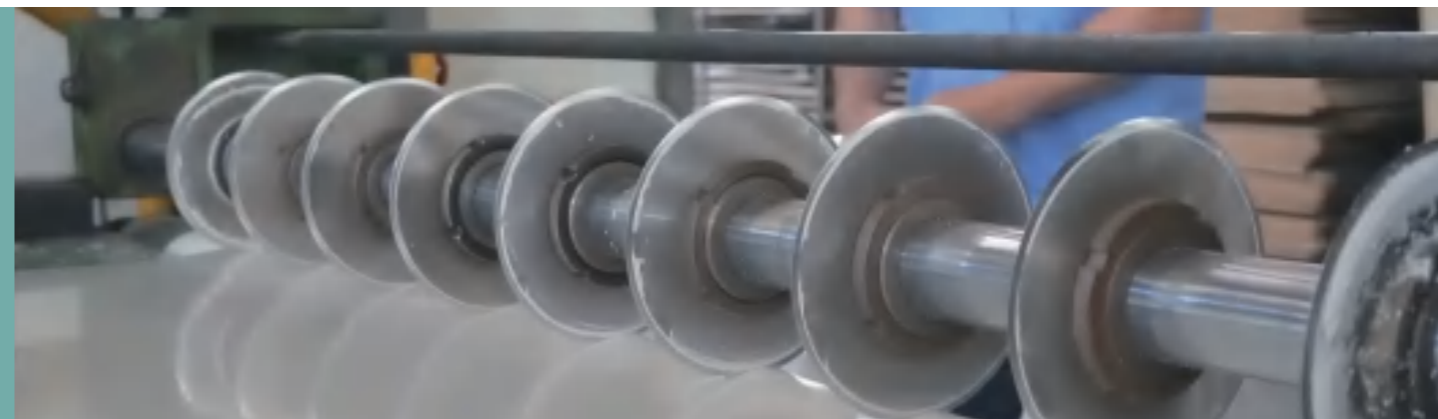
**产品颜色稳定牢固不易退色，适用于运动场，健身房和娱乐场所等。**

Fitness rubber flooring has become one of the most sought-after surfacing products, with fitness becoming more and more popular in today's society.

Within the past two decades, going to the gym has been an integral part of life for millions of fitness enthusiasts in the world. Flooring has stable color and is designed for use in arena, gym or recreational applications.

# 06 RUBBER SPECIAL-SHAPED PRODUCTS

## 橡胶异形件系列



我们收到客户的样品或图纸，并向客户提供高质量的成型零件。

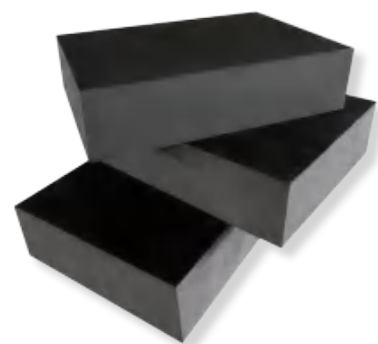
We receive samples or drawings from customers and provide them with high-quality molded parts.

### 产品分类 Product range

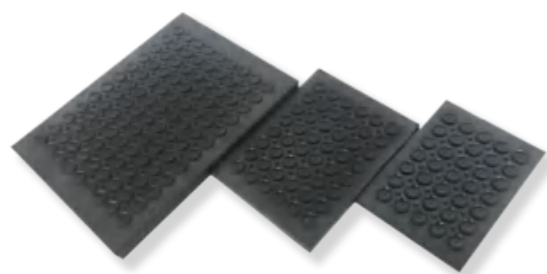
橡胶-金属粘接，防尘套，橡胶砖，橡胶油封，O型环，X形环，橡胶支座，减震器，橡胶垫圈，橡胶帽，电线橡胶保护器，硅橡胶成型件。

Rubber metal bonding, dust cover, rubber brick, rubber oil seal, O-ring, X-ring, rubber support, shock absorber, rubber washer, rubber cap, wire rubber protector, silicone rubber molding parts.

### 样品展示 Sample display



橡胶砖



橡胶减震块



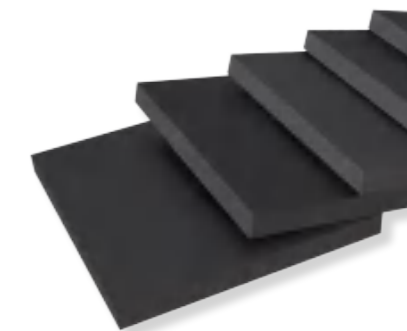
空调垫



圆形减震垫



皮带冲压



橡胶垫块



橡胶带



背胶橡胶条



橡胶打靶设备

# PRODUCT CERTIFICATION

## 产品认证

我们始终秉持着技术研发和高品质生产的理念，以优质设施、专业团队和严格标准为支撑，致力于为客户提供高标准的产品和服务。

We have always adhered to the concepts of technology research and development and high-quality production, supported by high-quality facilities, professional teams and strict standards, and are committed to providing customers with high-standard products and services.



SGS-三元乙丙检测



PONY-阻燃V1胶板



国标-耐油阻燃橡胶板



国标-工业橡胶板



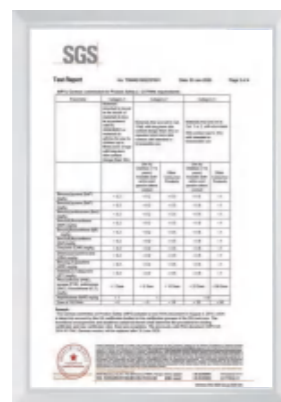
SGS-耐磨天然纯胶



SGS-防静电台垫



IEC 61111-电气级绝缘橡胶垫



SGS-牛马垫PAH检测



FDA-白色丁腈胶板



国标-绝缘橡胶板

# QUALITY INSPECTION/ LABORATORY

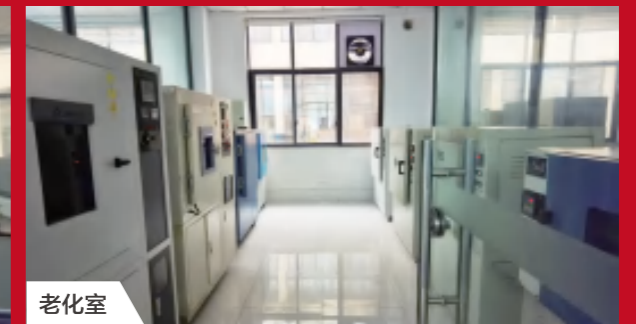
## 质检/实验室

我们拥有国家级B级技术研究中心，实验基地目前约为3000平方米。

We have a national B-level technology research center, the experimental base is currently about 3000 square meters.



多环芳烃实验室



老化室



物理实验室



物理实验室



样品制备室



化分室



质检区



质检区

# WORKSHOP

## 生产车间

我们拥有专利升级版炼胶机、平板硫化机、鼓式硫化机、压延机、密炼机等共220多台。

We have over 220 patented upgraded rubber mixing machines, flat vulcanizing machines, drum vulcanizing machines, rolling machines, internal mixer machines, etc.

# 220+

拥有机器220多台

Owning over 220 machines



大型平板硫化机 车间 Large flat vulcanization machine workshop



大宽幅鼓硫 车间 Large width drum vulcanization machine workshop



平板硫化机 车间 Flat vulcanization machine workshop



鼓式硫化机 车间 Drum vulcanization machine workshop

# PACKAGING DISPLAY

## 包装展示



白色编织袋  
White woven bag



彩色编织袋  
Colorful woven bag



黑色塑料膜  
Black plastic film



彩色塑料膜  
Colored plastic film



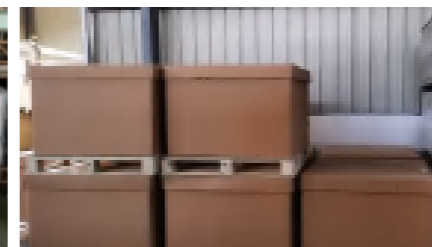
三合一复合纸  
Trinity composite paper



牛皮纸  
kraft paper



木托盘  
Wooden pallet



纸箱  
carton



木箱  
Wooden box

# WAREHOUSE DISPLAY

## 仓库展示