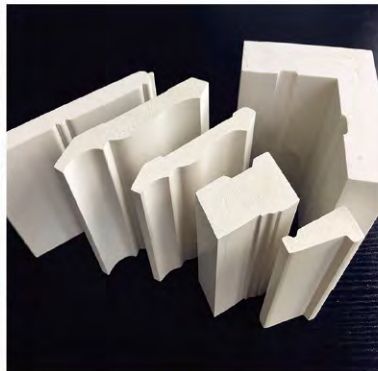




PVC SHEET



PVC MOULDING



PVC TRIM BOARD



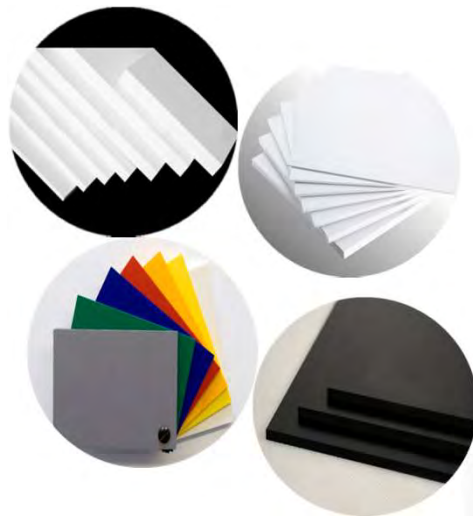
PVC FENCING




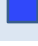



PRODUCTS: PVC SHEET

Our PVC Sheet (white & colored) is lightweight, versatile and durable which is ideal for use in many applications such as advertising, cabinet making and construction. It is easily handled, cut and fabricated by using conventional tools and equipments, and can be printed, painted or laminated. The improved surface hardness ensures reliable performance and excellent results. The robust surfaces and high durability make it also suitable for interior and exterior applications.

At a glance

- ◆ Universal sheet for all display applications
- ◆ Smooth surface finish with high surface hardness
- ◆ Excellent printing and laminating properties
- ◆ Easy processing
- ◆ Wide range of sheet sizes and thicknesses
- ◆ Special formats available on request
- ◆ Protection film available under request
- ◆ Fire behavior according to:
 - EN 13501-1:2007+A1:2009: B-s1, d0
 - NF P 92-507:2004: M-1, M-2
 - UL 94-2011: V-0



Color		Dimensions(mm)			Thickness Availability
		1220 × 2440	1560 × 3050	2050 × 3050	
White		1-32	1-20	1-20	
Red		3			
Yellow		3			
Blue		3			
Green		3			
Grey		3-20			
Black		3-20			

TYPICAL APPLICATIONS

Advertising

- Lightweight and durable signs
- Displays
- Exhibition stands
- POS/POP applications
- Direct printing
- Mounting
- Lettering
- Fabrication



◆ Signs



◆ Display



◆ UV flat-bed printing

◆ Silk-screen printing



◆ Photo mounting



◆ Exhibition stands

◆ Lettering



◆ POS/POP applications

◆ Digital cutting & fabrication



TYPICAL APPLICATIONS

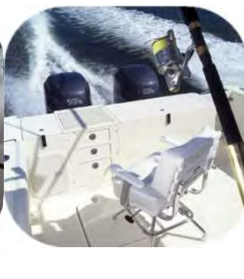
Construction & Furniture

- Interior and exterior decoration
- Shop fitting
- Shelf
- Kitchen and bathroom cabinets
- Formwork
- Shop fitting
- Protector case
- Bus flooring



◆ Interior and exterior decoration

◆ Partition



◆ Shelf

◆ Kitchen and bathroom cabinets

◆ Marine furniture



◆ Formwork

◆ Bus flooring

◆ Shop fitting

◆ Protector case

TYPICAL PROPERTIES

Property	Item	Method	Unit	Value	
Mechanical	Thickness		mm	10-30	
	Density	ASTM D792	g/cm ³	0.55±0.03	
	Tensile strength	Lengthways	ASTM D638	kg/cm ³	110
		Crosswise			80
	Flexural strength	Lengthways	ASTM D790	kg/cm ³	240
		Crosswise			180
	Compressive strength		ASTM D695	kg/cm ³	100
	Compressive stress for strain of 30%		ASTM D695	kg/cm ³	180
	Modulus of elasticity		ASTM D638	kg/cm ³	10000
	Hardness		ASTM D676	Shore D	50-80
Impact strength(+20°C)		ASTM D256	kg.cm/cm ³	1.5	
Thermal	Coefficient of linear thermal expansion (from-30°C to 50°C)		ASTM D696	mm/m°C	0.07
	Heating deflection temperature		ASTM D648	°C	55
	Thermal conductivity(from 0°C to 60°C)		DIN 52616	w/mk	0.03-0.07
	Rate of heat transfer		DIN 52616	w/(m2k)	1.2-3.0
Electrical	Volume resistivity		ASTM D257	Ω.cm	2.0×10 ¹⁴
	Surface resistance		ASTM D257	Ω	9.0×10 ¹⁴
	Dielectric strength		J16911	kv/cm	48
Others	Rw		DIN 52210/84	dB	35
	Water absorption after 7 days		ASTM D570	%	0.5
	Fire behaviour		UL-94	/	V-0

ROHS DIRECTIVE

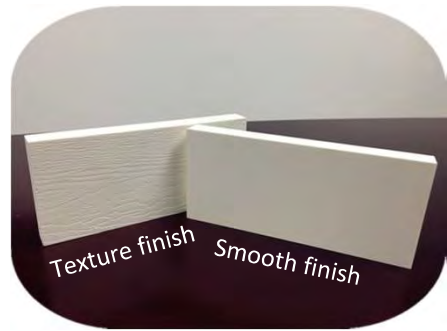
Our products meet the requirements of the ROHS directives of hazardous substances. There is no lead, mercury, cadmium, hexavalent chromium, polybrominated biphenyls (PBBs), polybrominated diphenylethers (PBDEs), formaldehyde, CFCs, asbestos, plasticizer nor silicone.

ISO9001:2008 APPROVED

We have introduced ISO9001:2008 since 2012 and ISO14001: 2004 since 2013., all we do is to ensure the consistent top quality.

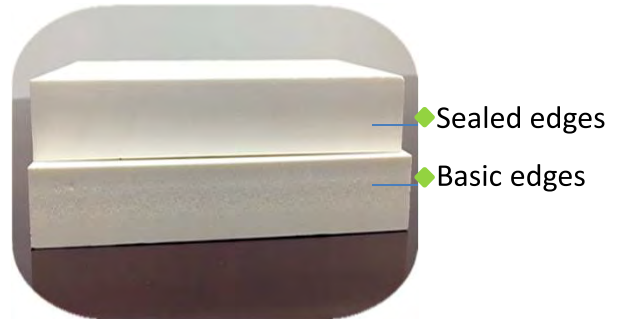
PRODUCTS: PVC TRIM BOARD

PVC Trim is easy to work similar to wood, but much less maintenance than wood. PVC Trim is available with a smooth finish on both sides, or texture on one side and smooth on the other. PVC trim is high-performance trim product, it can be sealed edges based on your requirement. Over time, dirt will collect on the edges but a sealed edge allows the dirt to be washed off easily.



FEATURES

- Low Maintenance, long-lasting
- Easy to work with
- Water, moisture and termite proof, fire retardant
- Can be cut, nailed, drilled, glued, painted just like wood
- No need to be painted, unless desired. When use outdoor, painting is recommended for maintaining color consistency for longer time
- Lifetime never rot
- Light weight, high-cell density
- Sealed edges available



ACTUAL DIMENSION															
PVC TRIM SMOOTH&TEXTURE	Thick ness	Width								Length					
		2 ½"	3 ½"	4 ½"	5 ½"	7 ¼"	9 ¼"	11 ¼"	15 ¼"	8'	10'	12'	16'	18'	20'
	3/8"	●	●	●	●	●	●	●	●	●	●	●	●	●	●
	1/2"	●	●	●	●	●	●	●	●	●	●	●	●	●	●
	5/8"	●	●	●	●	●	●	●	●	●	●	●	●	●	●
	3/4"	●	●	●	●	●	●	●	●	●	●	●	●	●	●
	1"	●	●	●	●	●	●	●	●	●	●	●	●	●	●

PRODUCTS: PVC TRIM BOARD



◆ Trim board options on corridors and balconies



◆ When eave meet trim board

◆ Garage door trim



◆ Anything wood can do, pvc trim board can do better

◆ Window & door trim

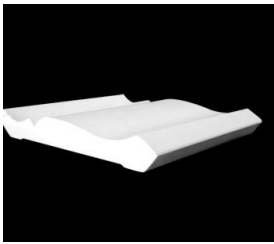
PRODUCTS: PVC MOULDING

PVC MOULDING are the perfect replacement of wood, with features of eco-friendly, lifetime never rot, low maintenance, moisture & termite proof, easy to install, does not promote mold or mildew, save time and labor with high energy efficiency, not easy to scratch, no painting required unless desired. When you think of moulding, we are an enduring solution for all your moulding need.

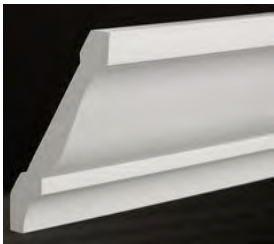


PRODUCTS: PVC CROWN MOULDING

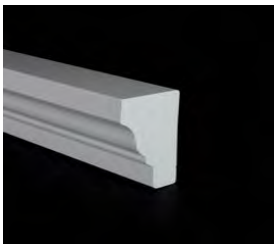
Crown Moulding provide a variety of application and aesthetic options. Traditionally used at the junction of a wall and ceiling, they can also be combined with other profiles to create classic build-outs and ornate decorative effects along the rake, above windows and doors, and at the capital and base of columns.



Crown
BTP49
9/16" × 3-5/8"



Crown
BTP47
11/16" × 4-5/8"

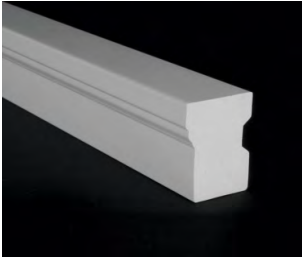


Rams crown
BTP068
1-13/32" × 2"

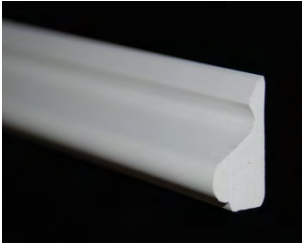


PRODUCTS: PVC CASING MOULDING

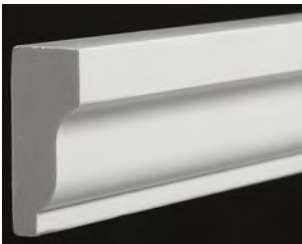
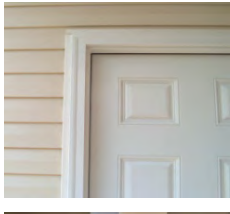
Casing profiles are decorative mouldings typically used flush against a wall, door or window to create surrounds. They can be used as a single moulding profile or combined with other profile styles to dramatically transform window and door aesthetics.



Brick Mould
BTP180
1-1/4" × 2"



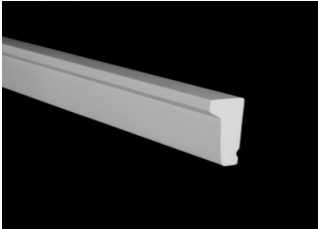
Base Cap
BTP164
11/16" × 1-1/8"



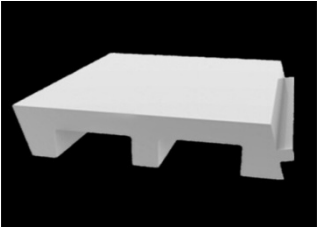
Shingle moulding
BTP210
11/16" × 1-5/8"

PRODUCTS: PVC SILL&DRIP MOULDING

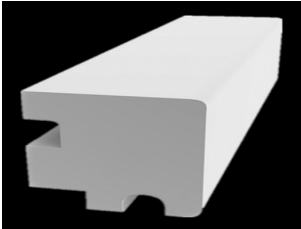
Sill & Drip profiles can be used as a brick ledge or water table to separate two different material veneers. These profiles also offer architectural detail and assist with water management around doors, windows and cladding.



Drip Cap
BTP197
11/16" × 1-5/8"



Sill
BTP948
1-1/4" × 4-15/16"

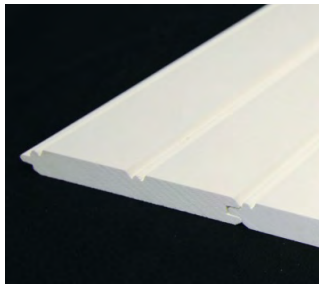


Sill nose
BTP937
1-3/8" × 1-5/16"



PRODUCTS: BEAD BOARD

Bead board is the perfect choice for porch ceilings and soffit applications, as well as for wainscot trim in bathrooms, laundry rooms or other high moisture interior areas.



Bead board
BTP001
1/2" × 5-1/8"



Installing a beadboard ceiling can provide you with a nice option for the ceiling in any room. While this type of material has some benefits, it is also associated with several drawbacks. Here are a few pros and cons of using a beadboard ceiling.

Pros

Looks: Installing beadboard on your ceiling can give you a very beautiful surface for the ceiling. It is available in a variety of colors and finishes. Regardless of what look you are trying to go for, beadboard can usually provide it for you.

Cost: Beadboard is one of the least expensive materials that you could install on a ceiling. You can usually find it for \$1 to \$2 per square foot at a lumber yard. It allows you to get a nice, finished look on the ceiling without spending much.

Cons

Water damage: If you are installing wood beadboard, you will have to worry about water damage. If water leaks down from the roof or second story, it can extensively damage the beadboard.

Installation: Installing beadboard on a ceiling is a difficult process. By comparison, painting the ceiling will be a lot easier and take much less time to complete. Make sure that you know how to install beadboard on the ceiling before you get started.

TRIM & MOULDING INSTALLATION GUIDE

INSTALLATION GUIDE:



◆ Cutting

Using standard woodworking equipment. For power miter saws, carbide tooth blades are recommended. Do not use fine-tooth metal-cutting blades, do not use plywood or metal blades because the kerf of the blade is too thin and can cause heat buildup in the material. To maintain a smooth edge, support the trim across its entire length when you cut it.



◆ Drilling

Do not use bits made for rigid pvc, avoid heat buildup from excessive friction, and remove the shavings from the drill hole frequently.



◆ Cleaning

Use a soft bristle brush and a bucket of soapy water to remove normal dirt and grime. For especially stubborn stains, use a cleaner suitable for pvc products. Your local building materials retailers can supply several different brands, better test any cleaners before use.

◆ Gluing

Temperature variation will cause pvc trim board and mouldings to expand and contract. To prevent open miter joints, we highly recommend gluing all joints using a quality instant glue or pvc cement, always test adhesive brands before using. You should use a combination of glue and mechanical fasteners, such as “glue and screw”, only glue is not enough to ensure a long-term bond.



◆ Painting

PVC Trim and Moulding products does not require painting but, like any pvc product, it will weather over time and painting will enhance these beautiful products and help them maintain color consistency for many years. 100% acrylic latex paint is recommended.



◆ Nailing

Stainless steel or hot-dipped galvanized nails or screws are recommended.



PRODUCTS: PVC FENCING & RAILING

Known as vinyl fence — is an excellent, low-maintenance alternative to wood fencing. Wood fences must be treated, painted or stained on a regular basis and need to be maintained from weathering every year.

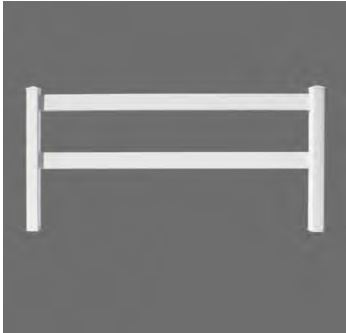
Features

- **Virtually maintenance free**
Less maintenance than a wood fence, never need sanding, staining or painting
- **Wide variety of styles, colors**
We now can produce white and tan color
- **Easy to install**
Pre-assembled, no special tools required.
- **Adds beauty and privacy**
To your home or garden
- **Lifetime limited warranty**



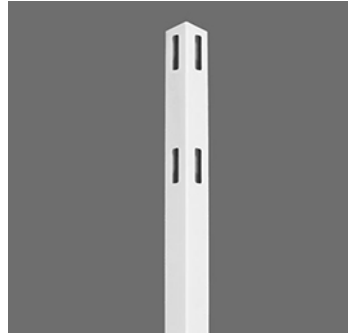
PRODUCTS: PVC FENCING

Notched Ranch Rail



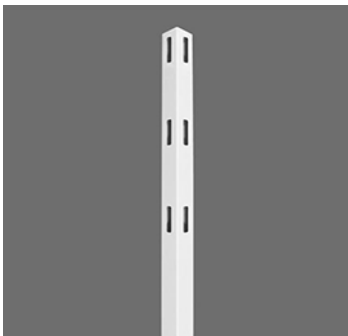
Nominal Size: 2" x 6" - 8'
Color/Finish: White / Tan
Actual Dimensions: 1-1/2" x 5-1/2" x 96"

4 x 4 Rail Post



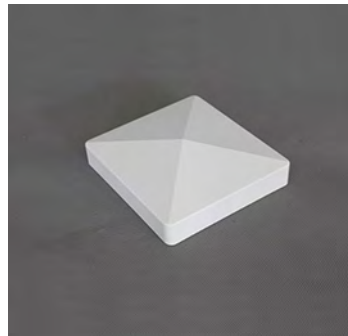
Nominal Size: 4" x 4" - 6'
Color/Finish: White / Tan
Actual Dimensions: 4" x 4" x 72"

5 x 5 Post



Nominal Size: 5" x 5" - 7'
Color/Finish: White / Tan
Actual Post Dimensions: 5" x 5" x 84"

Post Cap



Pyramid
Color/Finish: white
Size: 4" x 4" or 5" x 5"

PRODUCTS: PVC FENCING

6 x 6 Privacy Panel



6' x 6' Belmont Privacy Vinyl Fence Panel
Color/Finish: White / Tan
Actual Dimensions: 68-1/2" H x 66" W

6 x 6 Privacy Gate



6' x 3'6" Belmont Privacy Gate with Hardware
Color/Finish: White / Tan
Actual Dimensions: 68-1/2" H x 41-1/2" W

6 x 8 Privacy Panel



6' x 8' Richmond Privacy Fence Panel
Color/Finish: White / Tan
Actual Dimensions: 69-1/2" H x 86-3/8" W

6 x 8 Privacy Gate



Richmond Vinyl Fence Gate Hardware Kit
Color/Finish: White / Tan
To be used with Richmond Fence Panel Kit
Gate sizes from 39" up to 96" in width

HOW TO INSTALL PVC FENCE

Step 1- Measuring and Marking Off

The first step is to establish the measurements of the fence and its different sections. An equivalent area can now be measured off where the fence is going to be located using the stakes and string to create guides. The stakes for the corner posts should be a few inches past the post's final locations leaving the string to cross at the correct place. Set the posts at the same interval as the ends of the PVC fence sections. Measure for the gate and set the posts appropriately.

Step 2- Digging the Holes

Dig holes for the terminal posts, diameter of the dug holes should be 10" and depth should be 1/3 of the posts length plus another 4"

Step 3- Setting the Terminal Posts

Mix the concrete and work with one post at a time, pour the concrete into each hole and then lower the post into the cement. Level the post across the top with the regular level and check the vertical axis with the post level. Add more cement at this time in a manner where water will run away from the post.

Tying string to the top of the inserted posts will provide you with a visual guide for inserting the line posts. These posts are set the same as the terminal posts.

Step 4- Installing the Panels

Attach brackets for the PVC fencing with screws and do the same with the rail hangers. The separate panels should comfortably slide into the brackets. Screw the panels into place on the hangers.

Step 5- Installing the Gate

The gate is lined up with the bottom of the fence for proper fitting. Cut the 2x4 lumber to fit the insides of the two fence posts that the gate and latch will attach to. Attach these making sure that the wood is level. Screw the hinges and latches into place then try the gate to make sure that it works smoothly.

Step 6- Finishing Up the Fence

At this point, the post tops should be glued into place. Hold each in place for a minute to be sure that it is set.

PRODUCTS: PVC RAILING

Premium PVC Railing: 6'WX3'H



Nominal size: 6'WX3'H
Color/Finish: White/Tan/Black
Actual Dimension: 6'*3.75"*36"

Premium PVC Stair Railing: 6'WX3'H



Nominal size: 6'WX3'H
Color/Finish: White/Tan/Black
Actual Dimension: 6'WX3'H

Classic PVC Railing: 6'WX3'H



Nominal size: 6'WX3'H
Color/Finish: White/Tan/Black
Actual Dimension: 6'*3.75"*36"

Classic PVC Stair Railing: 6'WX3'H



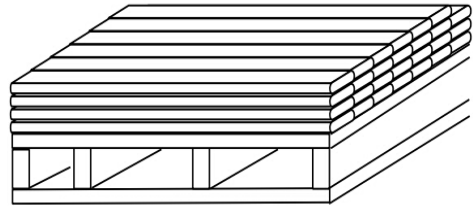
Nominal size: 6'WX3'H
Color/Finish: White/Tan/Black
Actual Dimension: 6'WX3'H

Note: Railing dimension can be available with 8'WX3'H, with choice of square, rectangle or colonial spindles. Post, trim ring, cap and bracket sold separately.

STORAGE & PACKAGE

Storage

- PVC trim, sheet, moulding, railing and fencing products should be stored on a flat and level surface. PVC products are more flexible than wood, they may deform on uneven surfaces. Ensure that storage areas, as well as all framing and substructures, are flat and level to minimize uneven surfaces .
- Products are shipped with a protective covering. If covering has been removed, take care to keep product free of dirt and debris at jobsite. If product gets dirty, clean after installation. Care should be taken to avoid damage to the ends, edges and surfaces.



Package

We provide several packings for sheet, trim board, mouldings, railing and fencing to make sure the goods are perfectly protected and easy for loading & unloading.

